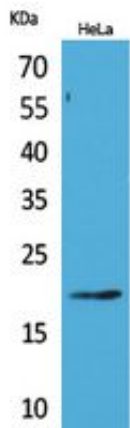


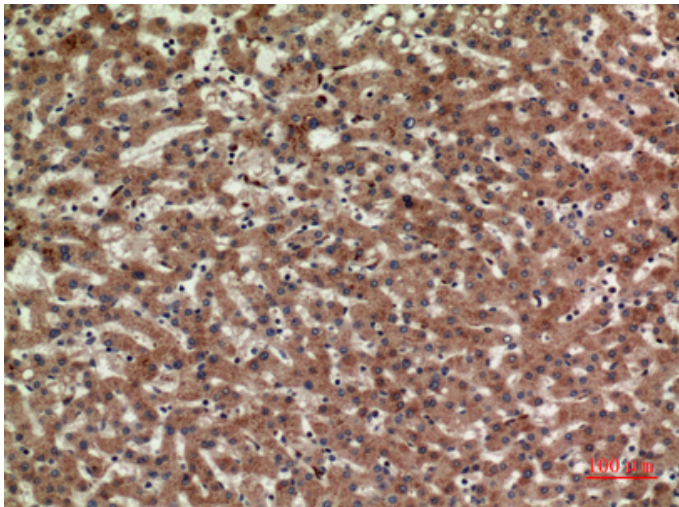
CD3- $\delta$  Polyclonal Antibody

Catalog_no :	AT5458
Applications :	WB,IHC-p,ELISA
Reactivity :	Human
Category :	抗原抗体
Size :	100 $\mu$ g/50 $\mu$ g/20 $\mu$ g
Gene_name :	CD3D
Protein_name :	T-cell surface glycoprotein CD3 delta chain
Humangene_id :	<a href="#">915</a>
Humanswissprot_no :	<a href="#">P04234</a>
Immunogen :	The antiserum was produced against synthesized peptide derived from the Internal region of human CD3D. AA range:41-90
Specificity :	CD3- $\delta$ Polyclonal Antibody detects endogenous levels of CD3- $\delta$ protein.
Formulation :	Liquid in PBS containing 50% glycerol, 0.5% BSA and 0.02% sodium azide.
Source :	Rabbit
Dilution :	Western Blot: 1/500 - 1/2000. IHC-p: 1/100-1/300. ELISA: 1/20000. Not yet tested in other applications.
Purification :	The antibody was affinity-purified from rabbit antiserum by affinity-chromatography using epitope-specific immunogen.
Concentration :	1 mg/ml
Storage_stability :	-20°C/1 year
Msds :	MSDS_Antibody.pdf
Other_name :	CD3D; T3D; T-cell surface glycoprotein CD3 delta chain; T-cell receptor T3 delta chain; CD3d
Molecular Weight :	18KD

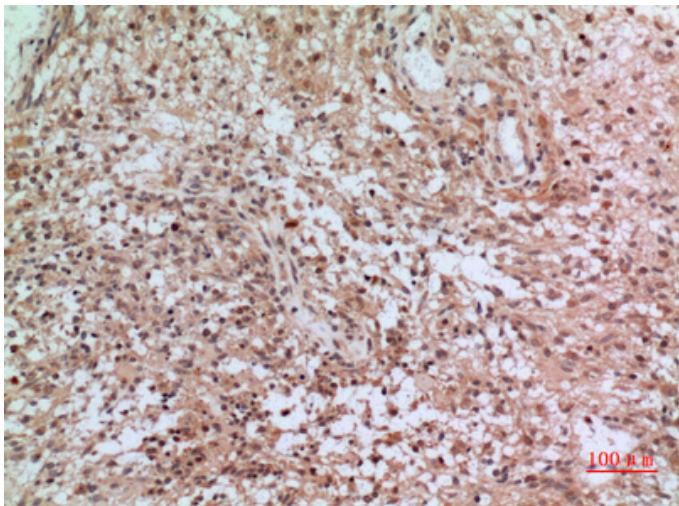
## Product Images



Western Blot analysis of HeLa cells using CD3-6 Polyclonal Antibody.. Secondary antibody was diluted at 1:20000



Immunohistochemical analysis of paraffin-embedded human-liver, antibody was diluted at 1:100



Immunohistochemical analysis of paraffin-embedded human-brain, antibody was diluted at 1:100

Immunohistochemical analysis of paraffin-embedded human-brain, antibody was diluted at 1:100

