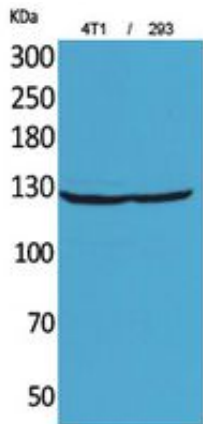




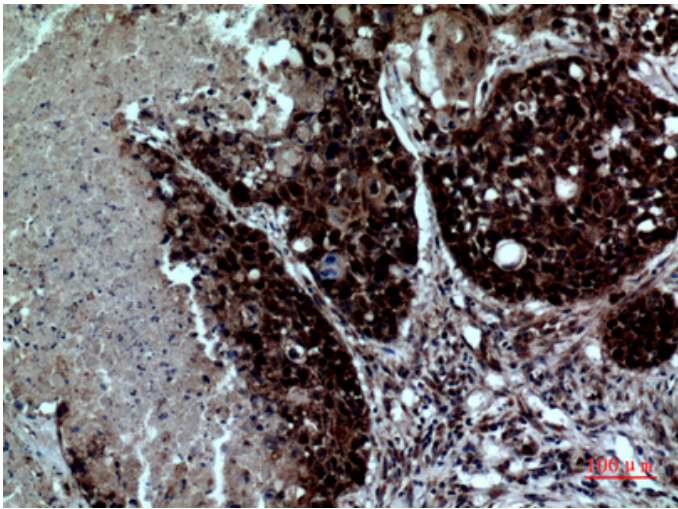
Integrin α D Polyclonal Antibody

Catalog_no :	AT5460
Applications :	WB,IHC-p,ELISA
Reactivity :	Human
Category :	抗原抗体
Size :	100 μ g/50 μ g/20 μ g
Gene_name :	ITGAD
Protein_name :	Integrin alpha-D
Humangene_id :	3681
Humanswissprot_no :	Q13349
Immunogen :	The antiserum was produced against synthesized peptide derived from the Internal region of human ITGAD. AA range:901-950
Specificity :	Integrin α D Polyclonal Antibody detects endogenous levels of Integrin α D protein.
Formulation :	Liquid in PBS containing 50% glycerol, 0.5% BSA and 0.02% sodium azide.
Source :	Rabbit
Dilution :	Western Blot: 1/500 - 1/2000. IHC-p: 1/100-1/300. ELISA: 1/20000. Not yet tested in other applications.
Purification :	The antibody was affinity-purified from rabbit antiserum by affinity-chromatography using epitope-specific immunogen.
Concentration :	1 mg/ml
Storage_stability :	-20°C/1 year
Msds :	MSDS_Antibody.pdf
Other_name :	ITGAD; Integrin alpha-D; ADB2; CD11 antigen-like family member D; Leukointegrin alpha D; CD11d
Molecular Weight :	127KD

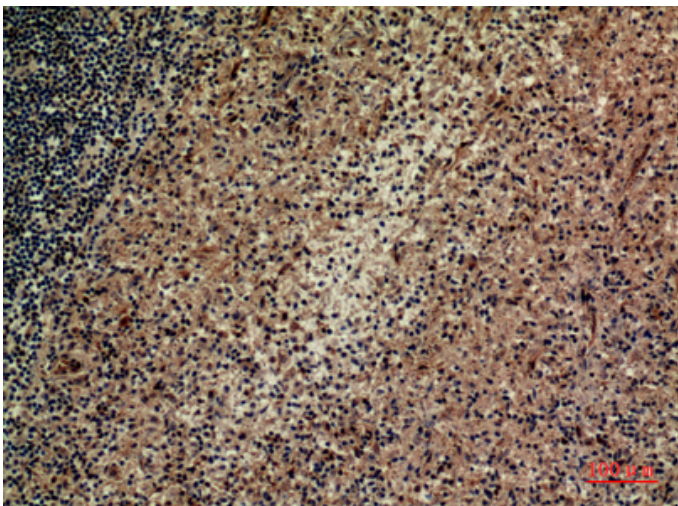
Product Images



Western Blot analysis of 4T1, 293 cells using Integrin α D Polyclonal Antibody.. Secondary antibody was diluted at 1:20000



Immunohistochemical analysis of paraffin-embedded human-lung, antibody was diluted at 1:100



Immunohistochemical analysis of paraffin-embedded human-spleen, antibody was diluted at 1:100