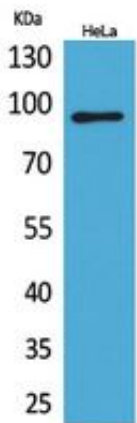


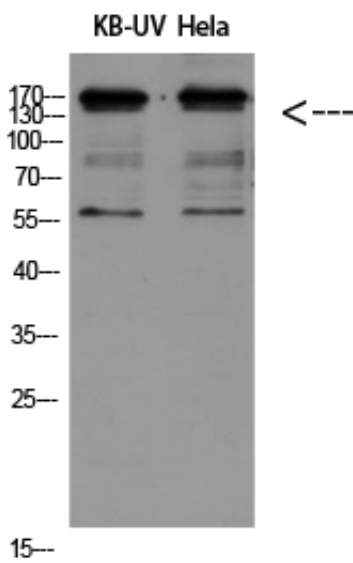
Integrin β 2 Polyclonal Antibody

Catalog_no :	AT5461
Applications :	WB,ELISA
Reactivity :	Human
Category :	抗原抗体
Size :	100 μ g/50 μ g/20 μ g
Gene_name :	ITGB2
Protein_name :	Integrin beta-2
Humangene_id :	3689
Humanswissprot_no :	P05107
Immunogen :	The antiserum was produced against synthesized peptide derived from the Internal region of human ITGB2. AA range:621-670
Specificity :	Integrin β 2 Polyclonal Antibody detects endogenous levels of Integrin β 2 protein.
Formulation :	Liquid in PBS containing 50% glycerol, 0.5% BSA and 0.02% sodium azide.
Source :	Rabbit
Dilution :	Western Blot: 1/500 - 1/2000. ELISA: 1/20000. Not yet tested in other applications.
Purification :	The antibody was affinity-purified from rabbit antiserum by affinity-chromatography using epitope-specific immunogen.
Concentration :	1 mg/ml
Storage_stability :	-20°C/1 year
Msds :	MSDS_Antibody.pdf
Other_name :	ITGB2; CD18; MFI7; Integrin beta-2; Cell surface adhesion glycoproteins LFA-1/CR3/p150,95 subunit beta; Complement receptor C3 subunit beta; CD18
Molecular Weight :	95KD

Product Images



Western Blot analysis of HeLa cells using Integrin β 2 Polyclonal Antibody. Antibody was diluted at 1:500. Secondary antibody was diluted at 1:20000



Western Blot analysis of KB-UV HeLa using Integrin β 2 Polyclonal Antibody diluted at 1:500. Secondary antibody was diluted at 1:20000