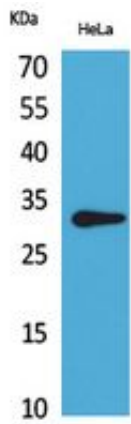




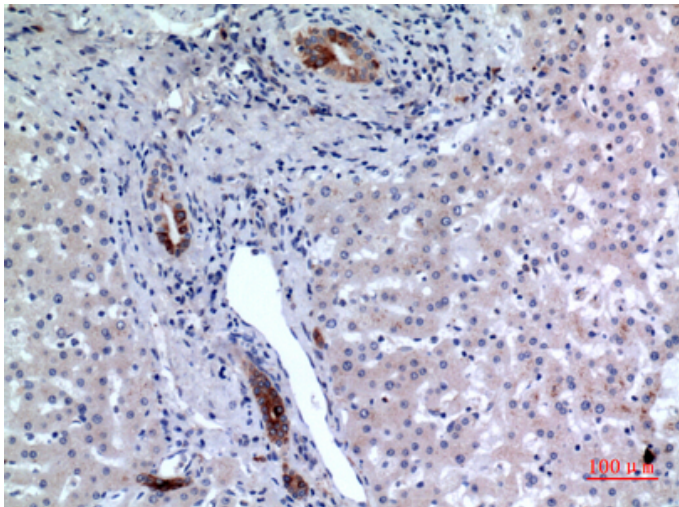
CD37 Polyclonal Antibody

Catalog_no :	AT5462
Applications :	WB,IHC-p,ELISA
Reactivity :	Human
Category :	抗原抗体
Size :	100µg/50µg/20µg
Gene_name :	CD37
Protein_name :	Leukocyte antigen CD37
Humangene_id :	951
Humanswissprot_no :	P11049
Immunogen :	The antiserum was produced against synthesized peptide derived from the Internal region of human CD37. AA range:81-130
Specificity :	CD37 Polyclonal Antibody detects endogenous levels of CD37 protein.
Formulation :	Liquid in PBS containing 50% glycerol, 0.5% BSA and 0.02% sodium azide.
Source :	Rabbit
Dilution :	Western Blot: 1/500 - 1/2000. IHC-p: 1/100-1/300. ELISA: 1/20000. Not yet tested in other applications.
Purification :	The antibody was affinity-purified from rabbit antiserum by affinity-chromatography using epitope-specific immunogen.
Concentration :	1 mg/ml
Storage_stability :	-20°C/1 year
Msds :	MSDS_Antibody.pdf
Other_name :	CD37; TSPAN26; Leukocyte antigen CD37; Tetraspanin-26; Tspan-26; CD37
Molecular Weight :	30KD

Product Images



Western Blot analysis of HeLa cells using CD37 Polyclonal Antibody.. Secondary antibody was diluted at 1:20000



Immunohistochemical analysis of paraffin-embedded human-liver, antibody was diluted at 1:100