

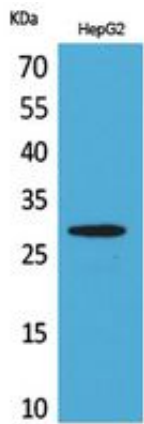
CD69 Polyclonal Antibody

Catalog_no :	AT5463
Applications :	WB,ELISA
Reactivity :	Human,Mouse,Rat
Category :	抗原抗体
Size :	100µg/50µg/20µg
Gene_name :	CD69
Protein_name :	Early activation antigen CD69
Humangene_id :	969
Humanswissprot_no :	Q07108
Mousegene_id :	12515
Mouseswissprot_no :	P37217
Immunogen :	The antiserum was produced against synthesized peptide derived from the Internal region of human CD69. AA range:91-140
Specificity :	CD69 Polyclonal Antibody detects endogenous levels of CD69 protein.
Formulation :	Liquid in PBS containing 50% glycerol, 0.5% BSA and 0.02% sodium azide.
Source :	Rabbit
Dilution :	Western Blot: 1/500 - 1/2000. ELISA: 1/20000. Not yet tested in other applications.
Purification :	The antibody was affinity-purified from rabbit antiserum by affinity-chromatography using epitope-specific immunogen.
Concentration :	1 mg/ml
Storage_stability :	-20°C/1 year
Msds :	MSDS_Antibody.pdf
Other_name :	CD69; CLEC2C; Early activation antigen CD69; Activation inducer molecule; AIM; BL-AC/P26; C-type lectin domain family 2 member C; EA1; Early T-cell activation antigen p60; GP32/28; Leukocyte surface antigen Leu-23; MLR-3; CD69
Molecular	25KD



Weight :

Product Images



Western Blot analysis of HepG2 cells using CD69 Polyclonal Antibody.. Secondary antibody was diluted at 1:20000