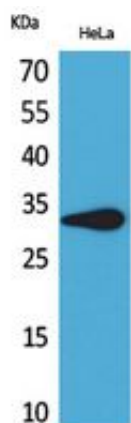


CD85f Polyclonal Antibody

Catalog_no :	AT5465
Applications :	WB,ELISA
Reactivity :	Human
Category :	抗原抗体
Size :	100µg/50µg/20µg
Gene_name :	LILRA5
Protein_name :	Leukocyte immunoglobulin-like receptor subfamily A member 5
Humangene_id :	353514
Humanswissprot_no :	A6NI73
Immunogen :	The antiserum was produced against synthesized peptide derived from the Internal region of human LILRA5. AA range:141-190
Specificity :	CD85f Polyclonal Antibody detects endogenous levels of CD85f protein.
Formulation :	Liquid in PBS containing 50% glycerol, 0.5% BSA and 0.02% sodium azide.
Source :	Rabbit
Dilution :	Western Blot: 1/500 - 1/2000. ELISA: 1/20000. Not yet tested in other applications.
Purification :	The antibody was affinity-purified from rabbit antiserum by affinity-chromatography using epitope-specific immunogen.
Concentration :	1 mg/ml
Storage_stability :	-20°C/1 year
Msds :	MSDS_Antibody.pdf
Other_name :	LILRA5; ILT11; LILRB7; LIR9; Leukocyte immunoglobulin-like receptor subfamily A member 5; CD85 antigen-like family member F; Immunoglobulin-like transcript 11; ILT-11; Leukocyte immunoglobulin-like receptor 9; LIR-9; CD85f
Molecular Weight :	33KD

Product Images



Western Blot analysis of HeLa cells using CD85f Polyclonal Antibody.. Secondary antibody was diluted at 1:20000