



CD110 Polyclonal Antibody

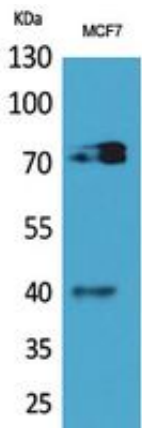
Catalog_no :	AT5469
Applications :	WB,IHC-p,ELISA
Reactivity :	Human,Mouse,Rat
Category :	抗原抗体
Size :	100µg/50µg/20µg
Gene_name :	MPL
Protein_name :	Thrombopoietin receptor
Humangene_id :	4352
Humanswissprot_no :	P40238
Mousegene_id :	17480
Mouseswissprot_no :	Q08351
Immunogen :	Synthesized peptide derived from Thrombopoietin receptor at AA range: 321-370
Specificity :	CD110 Polyclonal Antibody detects endogenous levels of CD110 protein.
Formulation :	Liquid in PBS containing 50% glycerol, 0.5% BSA and 0.02% sodium azide.
Source :	Rabbit
Dilution :	Western Blot: 1/500 - 1/2000. IHC-p: 1/100-1/300. ELISA: 1/20000. Not yet tested in other applications.
Purification :	The antibody was affinity-purified from rabbit antiserum by affinity-chromatography using epitope-specific immunogen.
Concentration :	1 mg/ml
Storage_stability :	-20°C/1 year
Msds :	MSDS_Antibody.pdf
Other_name :	MPL; TPOR; Thrombopoietin receptor; TPO-R; Myeloproliferative leukemia protein; Proto-oncogene c-Mpl; CD110
Molecular Weight :	69KD,40KD



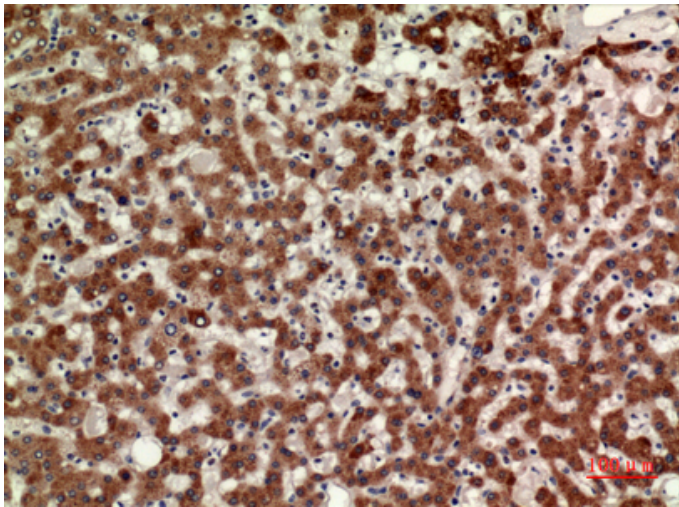
专注二抗产品

Biodragon旗下品牌

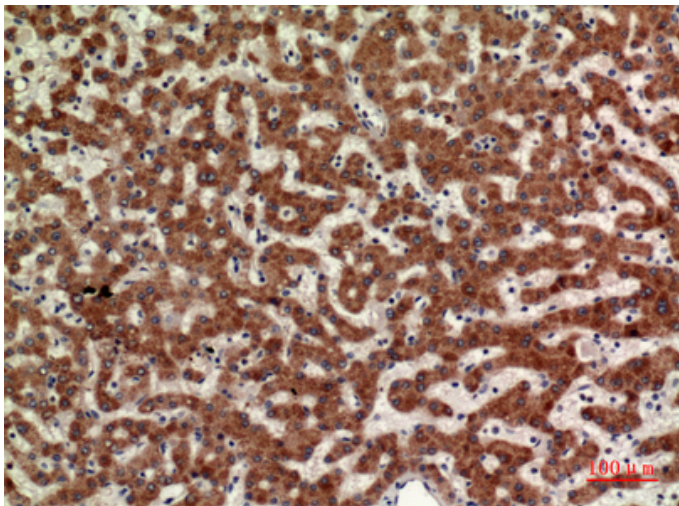
Product Images



Western Blot analysis of MCF7 cells using CD110 Polyclonal Antibody.. Secondary antibody was diluted at 1:20000



Immunohistochemical analysis of paraffin-embedded human-liver, antibody was diluted at 1:100



Immunohistochemical analysis of paraffin-embedded human-liver, antibody was diluted at 1:100