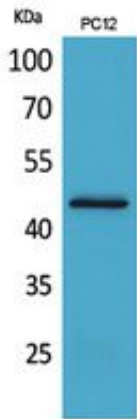


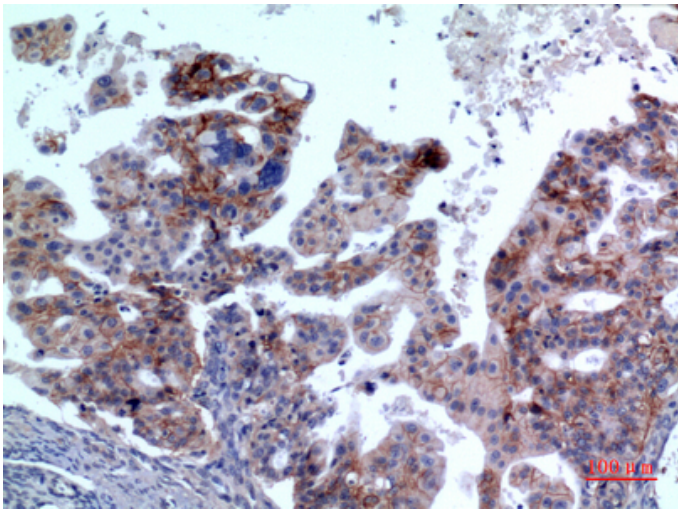
IL-1RII Polyclonal Antibody

Catalog_no :	AT5470
Applications :	WB,IHC-p,ELISA
Reactivity :	Human
Category :	抗原抗体
Size :	100µg/50µg/20µg
Gene_name :	IL1R2
Protein_name :	Interleukin-1 receptor type 2
Humangene_id :	7850
Humanswissprot_no :	P27930
Immunogen :	The antiserum was produced against synthesized peptide derived from the Internal region of human IL1R2. AA range:141-190
Specificity :	IL-1RII Polyclonal Antibody detects endogenous levels of IL-1RII protein.
Formulation :	Liquid in PBS containing 50% glycerol, 0.5% BSA and 0.02% sodium azide.
Source :	Rabbit
Dilution :	Western Blot: 1/500 - 1/2000. IHC-p: 1/100-1/300. ELISA: 1/20000. Not yet tested in other applications.
Purification :	The antibody was affinity-purified from rabbit antiserum by affinity-chromatography using epitope-specific immunogen.
Concentration :	1 mg/ml
Storage_stability :	-20°C/1 year
Msds :	MSDS_Antibody.pdf
Other_name :	IL1R2; IL1RB; Interleukin-1 receptor type 2; IL-1R-2; IL-1RT-2; IL-1RT2; CD121 antigen-like family member B; CDw121b; IL-1 type II receptor; Interleukin-1 receptor beta; IL-1R-beta; Interleukin-1 receptor type II; CD121b
Molecular Weight :	43KD

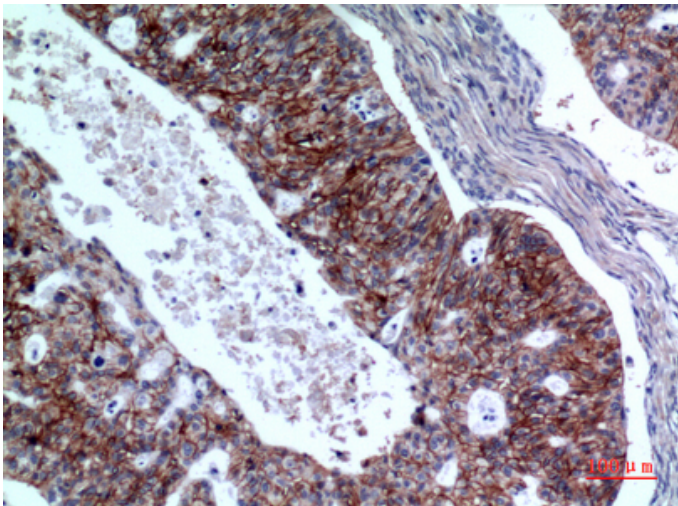
Product Images



Western Blot analysis of PC12 cells using IL-1RII Polyclonal Antibody.. Secondary antibody was diluted at 1:20000

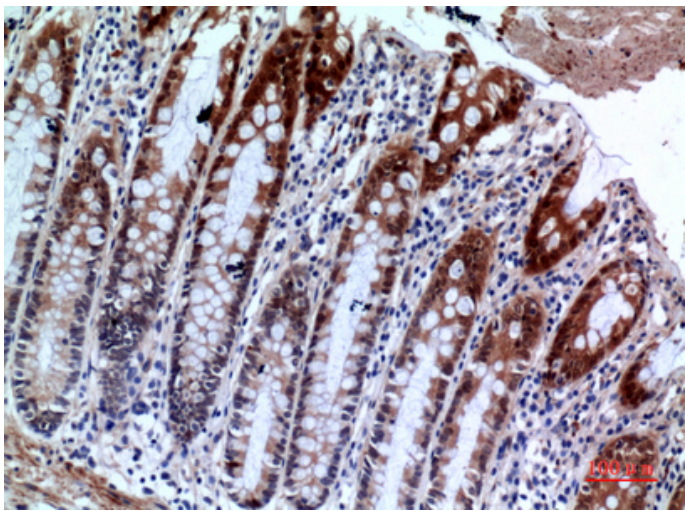
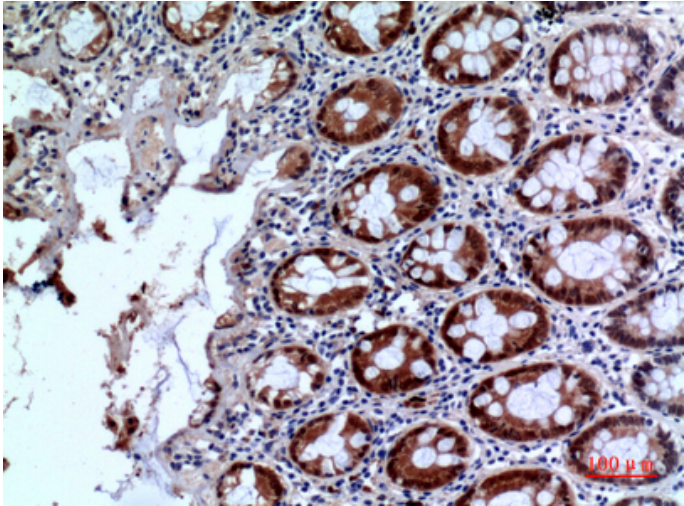


Immunohistochemical analysis of paraffin-embedded human-Ovarian-cancer, antibody was diluted at 1:100



Immunohistochemical analysis of paraffin-embedded human-Ovarian-cancer, antibody was diluted at 1:100

Immunohistochemical analysis of paraffin-embedded human-colon, antibody was diluted at 1:100



Immunohistochemical analysis of paraffin-embedded human-colon, antibody was diluted at 1:100