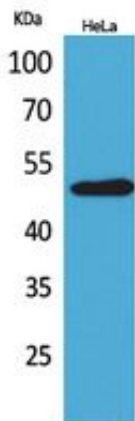


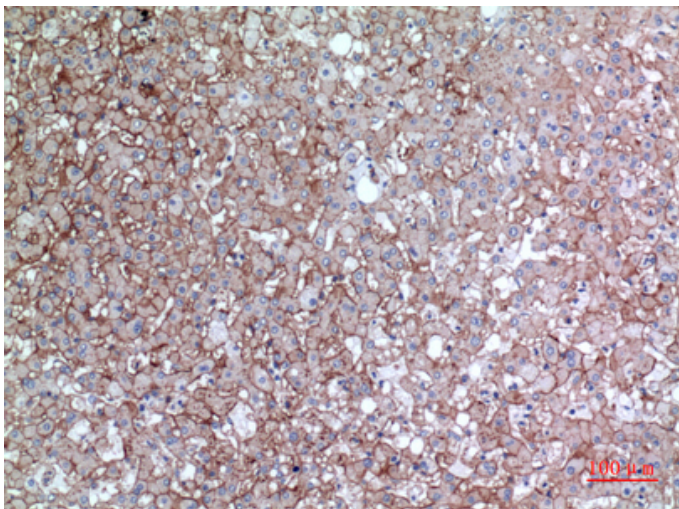
EMMPRIN Polyclonal Antibody

| | |
|---------------------|---|
| Catalog_no : | AT5471 |
| Applications : | WB,IHC-p,ELISA |
| Reactivity : | Human |
| Category : | 抗原抗体 |
| Size : | 100µg/50µg/20µg |
| Gene_name : | BSG |
| Protein_name : | Basigin |
| Humangene_id : | 682 |
| Humanswissprot_no : | P35613 |
| Immunogen : | The antiserum was produced against synthesized peptide derived from the Internal region of human BSG. AA range:221-270 |
| Specificity : | EMMPRIN Polyclonal Antibody detects endogenous levels of EMMPRIN protein. |
| Formulation : | Liquid in PBS containing 50% glycerol, 0.5% BSA and 0.02% sodium azide. |
| Source : | Rabbit |
| Dilution : | Western Blot: 1/500 - 1/2000. IHC-p: 1/100-1/300. ELISA: 1/20000. Not yet tested in other applications. |
| Purification : | The antibody was affinity-purified from rabbit antiserum by affinity-chromatography using epitope-specific immunogen. |
| Concentration : | 1 mg/ml |
| Storage_stability : | -20°C/1 year |
| Msds : | MSDS_Antibody.pdf |
| Other_name : | BSG; Basigin; 5F7; Collagenase stimulatory factor; Extracellular matrix metalloproteinase inducer; EMMPRIN; Leukocyte activation antigen M6; OK blood group antigen; Tumor cell-derived collagenase stimulatory factor; TCSF; CD147 |
| Molecular Weight : | 42KD |

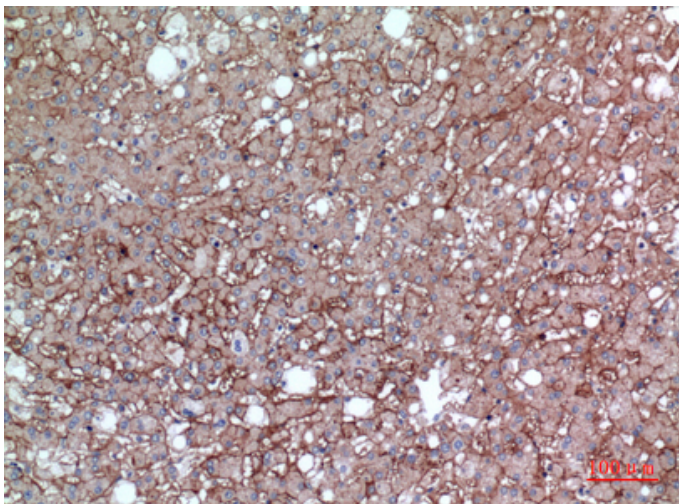
Product Images



Western Blot analysis of HeLa cells using EMMPRIN Polyclonal Antibody.. Secondary antibody was diluted at 1:20000

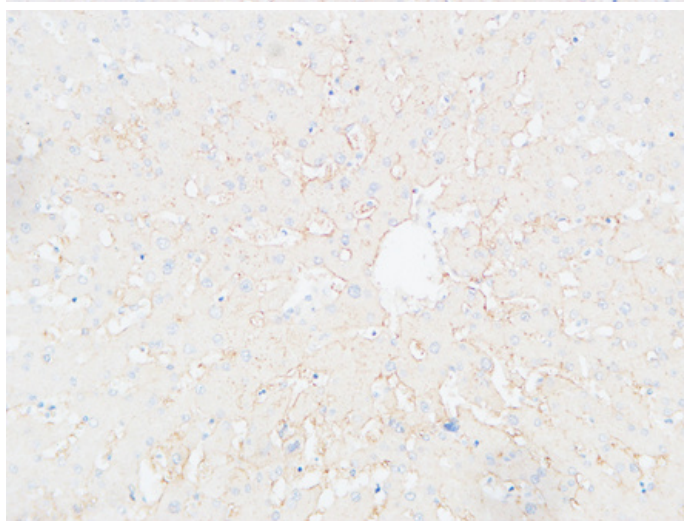
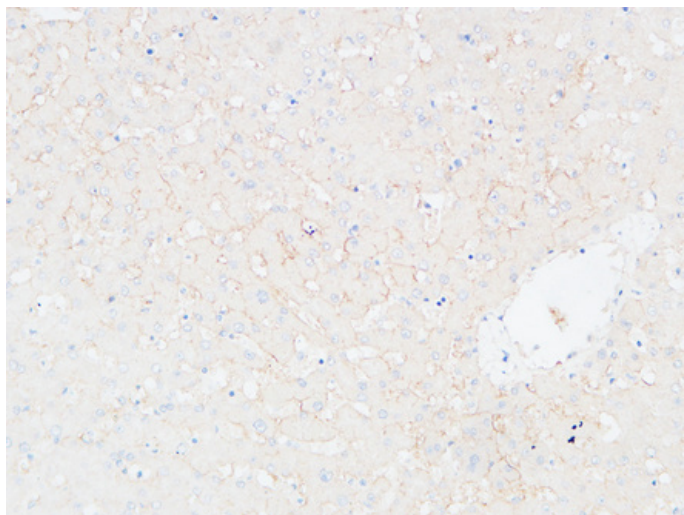


Immunohistochemical analysis of paraffin-embedded human-liver, antibody was diluted at 1:100

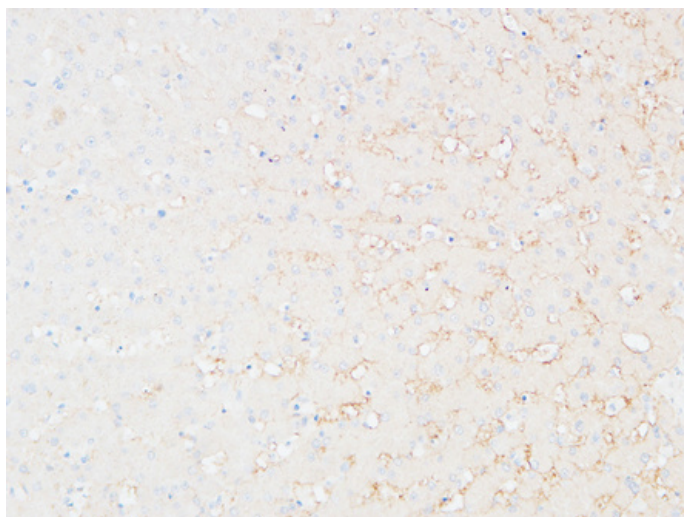


Immunohistochemical analysis of paraffin-embedded human-liver, antibody was diluted at 1:100

Immunohistochemical analysis of paraffin-embedded Human Liver. 1, Antibody was diluted at 1:100(4°,overnight). 2, High-pressure and temperature EDTA, pH8.0 was used for antigen retrieval. 3,Secondary antibody was diluted at 1:200(room temperature, 30min).



Immunohistochemical analysis of paraffin-embedded Human Liver. 1, Antibody was diluted at 1:100(4°,overnight). 2, High-pressure and temperature EDTA, pH8.0 was used for antigen retrieval. 3,Secondary antibody was diluted at 1:200(room temperature, 30min).



Immunohistochemical analysis of paraffin-embedded Human Liver. 1, Antibody was diluted at 1:100(4°,overnight). 2, High-pressure and temperature EDTA, pH8.0 was used for antigen retrieval. 3,Secondary antibody was diluted at 1:200(room temperature, 30min).