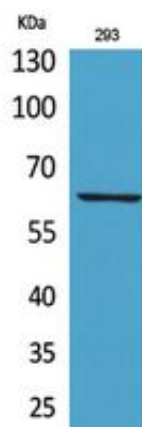




IL-18R Polyclonal Antibody

Catalog_no :	AT5472
Applications :	WB,ELISA
Reactivity :	Human
Category :	抗原抗体
Size :	100µg/50µg/20µg
Gene_name :	IL18R1
Protein_name :	Interleukin-18 receptor 1
Humangene_id :	8809
Humanswissprot_no :	Q13478
Immunogen :	The antiserum was produced against synthesized peptide derived from the Internal region of human IL18R1. AA range:231-280
Specificity :	IL-18R Polyclonal Antibody detects endogenous levels of IL-18R protein.
Formulation :	Liquid in PBS containing 50% glycerol, 0.5% BSA and 0.02% sodium azide.
Source :	Rabbit
Dilution :	Western Blot: 1/500 - 1/2000. ELISA: 1/20000. Not yet tested in other applications.
Purification :	The antibody was affinity-purified from rabbit antiserum by affinity-chromatography using epitope-specific immunogen.
Concentration :	1 mg/ml
Storage_stability :	-20°C/1 year
Msds :	MSDS_Antibody.pdf
Other_name :	IL18R1; IL1RRP; Interleukin-18 receptor 1; IL-18R-1; IL-18R1; CD218 antigen-like family member A; CDw218a; IL1 receptor-related protein; IL-1Rrp; IL1R-rp; CD218a
Molecular Weight :	63KD

Product Images



Western Blot analysis of 293 cells using IL-18R Polyclonal Antibody.. Secondary antibody was diluted at 1:20000