

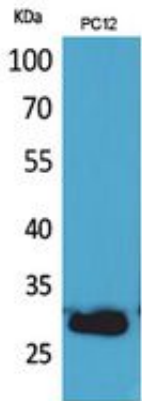
CD200 Polyclonal Antibody

Catalog_no :	AT5474
Applications :	WB,IHC-p,ELISA
Reactivity :	Human
Category :	抗原抗体
Size :	100µg/50µg/20µg
Gene_name :	CD200
Protein_name :	OX-2 membrane glycoprotein
Humangene_id	4345
:	
Humanswissprot	P41217
_no :	
Mouseswissprot	O54901
_no :	
Ratswissprot_no	P04218
:	
Immunogen :	The antiserum was produced against synthesized peptide derived from the Internal region of human CD200. AA range:171-220
Specificity :	CD200 Polyclonal Antibody detects endogenous levels of CD200 protein.
Formulation :	Liquid in PBS containing 50% glycerol, 0.5% BSA and 0.02% sodium azide.
Source :	Rabbit
Dilution :	Western Blot: 1/500 - 1/2000. IHC-p: 1/100-1/300. ELISA: 1/20000. Not yet tested in other applications.
Purification :	The antibody was affinity-purified from rabbit antiserum by affinity-chromatography using epitope-specific immunogen.
Concentration :	1 mg/ml
Storage_stability	-20°C/1 year
:	
Msds :	MSDS_Antibody.pdf
Other_name :	CD200; MOX1; MOX2; My033; OX-2 membrane glycoprotein; CD200
Molecular	31KD

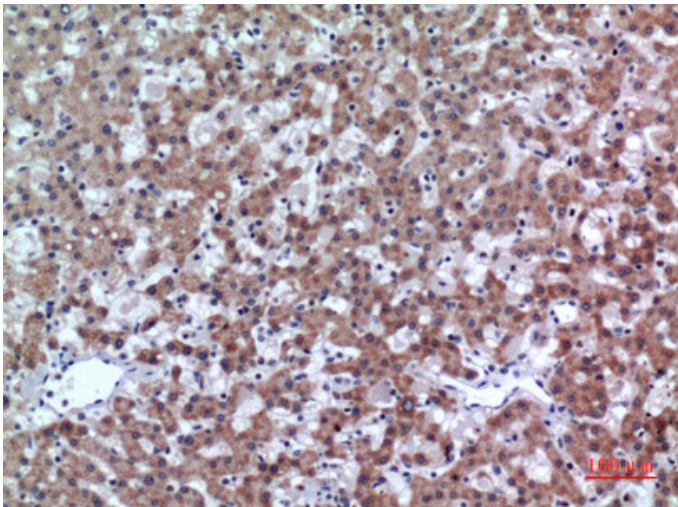


Weight :

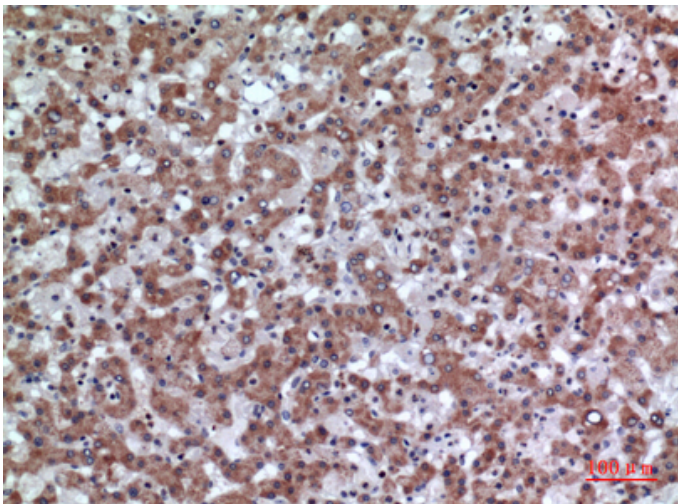
Product Images



Western Blot analysis of PC12 cells using CD200 Polyclonal Antibody.. Secondary antibody was diluted at 1:20000

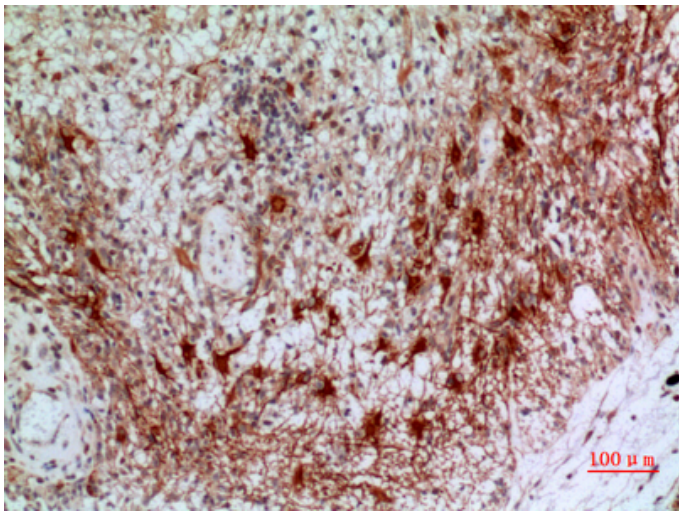
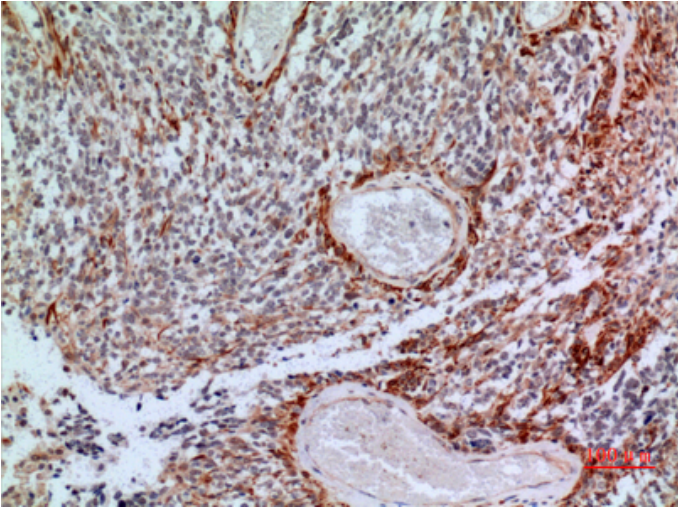


Immunohistochemical analysis of paraffin-embedded human-liver, antibody was diluted at 1:100



Immunohistochemical analysis of paraffin-embedded human-liver, antibody was diluted at 1:100

Immunohistochemical analysis of paraffin-embedded human-brain, antibody was diluted at 1:100



Immunohistochemical analysis of paraffin-embedded human-brain, antibody was diluted at 1:100