

CD300f Polyclonal Antibody

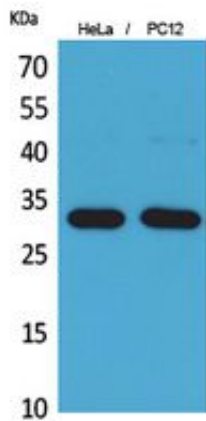
Catalog_no :	AT5475
Applications :	WB,IHC-p,ELISA
Reactivity :	Human
Category :	抗原抗体
Size :	100µg/50µg/20µg
Gene_name :	CD300LF
Protein_name :	CMRF35-like molecule 1
Humangene_id :	146722
Humanswissprot_no :	Q8TDQ1
Mousegene_id :	246746
Mouseswissprot_no :	Q6SIQ7
Ratgene_id :	287818
Ratswissprot_no :	Q566E6
Immunogen :	The antiserum was produced against synthesized peptide derived from the Internal region of human CD300LF. AA range:41-90
Specificity :	CD300f Polyclonal Antibody detects endogenous levels of CD300f protein.
Formulation :	Liquid in PBS containing 50% glycerol, 0.5% BSA and 0.02% sodium azide.
Source :	Rabbit
Dilution :	Western Blot: 1/500 - 1/2000. IHC-p: 1/100-1/300. ELISA: 1/20000. Not yet tested in other applications.
Purification :	The antibody was affinity-purified from rabbit antiserum by affinity-chromatography using epitope-specific immunogen.
Concentration :	1 mg/ml
Storage_stability :	-20°C/1 year
Msds :	MSDS_Antibody.pdf



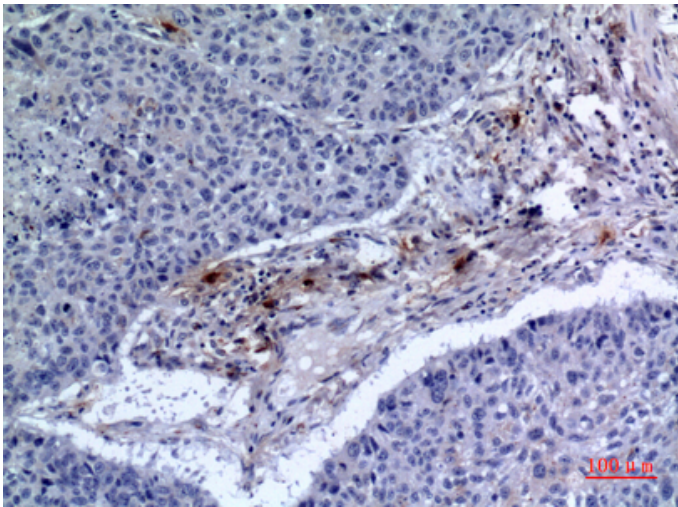
Other_name : CD300LF; CD300F; CLM1; IGSF13; IREM1; NKIR; CMRF35-like molecule 1; CLM-1; CD300 antigen-like family member F; Immune receptor expressed on myeloid cells 1; IREM-1; Immunoglobulin superfamily member 13; IgSF13; NK inhibitory receptor; CD300f

Molecular Weight : 32KD

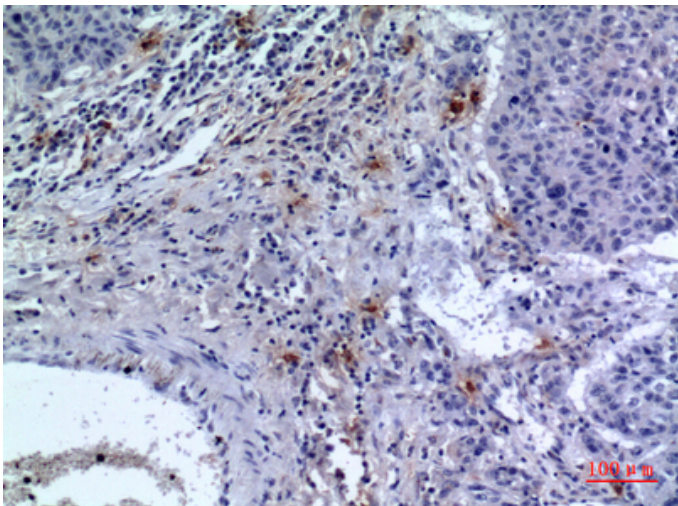
Product Images



Western Blot analysis of HeLa, PC12 cells using CD300f Polyclonal Antibody.. Secondary antibody was diluted at 1:20000



Immunohistochemical analysis of paraffin-embedded human-lung, antibody was diluted at 1:100



Immunohistochemical analysis of paraffin-embedded human-lung, antibody was diluted at 1:100