

## CD239 Polyclonal Antibody

Catalog_no :	<u>AT5477</u>
Applications :	<u>WB,ELISA</u>
Reactivity :	<u>Human,Mouse,Rat</u>
Category :	<u>抗原抗体</u>
Size :	<u>100µg/50µg/20µg</u>
Gene_name :	<u>BCAM</u>
Protein_name :	<u>Basal cell adhesion molecule</u>
Humangene_id :	<u><a href="#">4059</a></u>
Humanswissprot_no :	<u><a href="#">P50895</a></u>
Mousegene_id :	<u><a href="#">57278</a></u>
Mouseswissprot_no :	<u><a href="#">Q9R069</a></u>
Ratgene_id :	<u><a href="#">78958</a></u>
Ratswissprot_no :	<u><a href="#">Q9ESS6</a></u>
Immunogen :	<u>The antiserum was produced against synthesized peptide derived from the Internal region of human BCAM. AA range:191-240</u>
Specificity :	<u>CD239 Polyclonal Antibody detects endogenous levels of CD239 protein.</u>
Formulation :	<u>Liquid in PBS containing 50% glycerol, 0.5% BSA and 0.02% sodium azide.</u>
Source :	<u>Rabbit</u>
Dilution :	<u>Western Blot: 1/500 - 1/2000. ELISA: 1/20000. Not yet tested in other applications.</u>
Purification :	<u>The antibody was affinity-purified from rabbit antiserum by affinity-chromatography using epitope-specific immunogen.</u>
Concentration :	<u>1 mg/ml</u>
Storage_stability :	<u>-20°C/1 year</u>
Msds :	<u><a href="#">MSDS_Antibody.pdf</a></u>



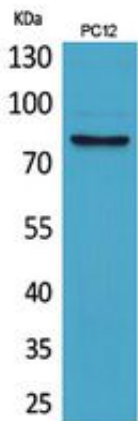
Other\_name : BCAM; LU; MSK19; Basal cell adhesion molecule; Auberger B antigen; B-CAM cell surface glycoprotein; F8/G253 antigen; Lutheran antigen; Lutheran blood group glycoprotein; CD239

---

Molecular Weight : 78KD

---

## Product Images



Western Blot analysis of PC12 cells using CD239 Polyclonal Antibody.. Secondary antibody was diluted at 1:20000