

CD225 Polyclonal Antibody

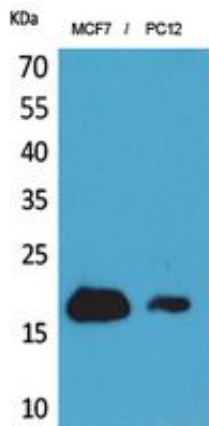
Catalog_no :	AT5478
Applications :	WB,IHC-p,ELISA
Reactivity :	Human
Category :	抗原抗体
Size :	100µg/50µg/20µg
Gene_name :	IFITM1
Protein_name :	Interferon-induced transmembrane protein 1
Humangene_id :	8519
Humanswissprot_no :	P13164
Mousegene_id :	68713
Mouseswissprot_no :	Q9D103
Immunogen :	The antiserum was produced against synthesized peptide derived from the N-terminal region of human IFITM1. AA range:1-50
Specificity :	CD225 Polyclonal Antibody detects endogenous levels of CD225 protein.
Formulation :	Liquid in PBS containing 50% glycerol, 0.5% BSA and 0.02% sodium azide.
Source :	Rabbit
Dilution :	Western Blot: 1/500 - 1/2000. IHC-p: 1/100-1/300. ELISA: 1/20000. Not yet tested in other applications.
Purification :	The antibody was affinity-purified from rabbit antiserum by affinity-chromatography using epitope-specific immunogen.
Concentration :	1 mg/ml
Storage_stability :	-20°C/1 year
Msds :	MSDS_Antibody.pdf
Other_name :	IFITM1; CD225; IFI17; Interferon-induced transmembrane protein 1; Dispanin subfamily A member 2a; DSPA2a; Interferon-induced protein 17; Interferon-inducible protein 9-27; Leu-13 antigen; CD225



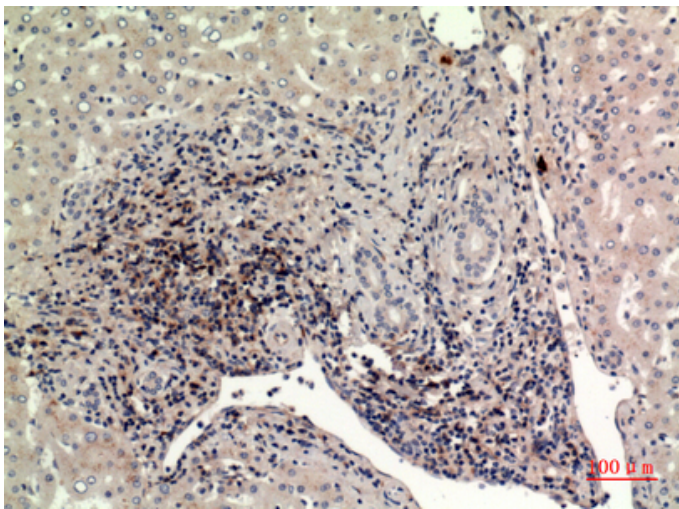
Molecular
Weight :

15KD

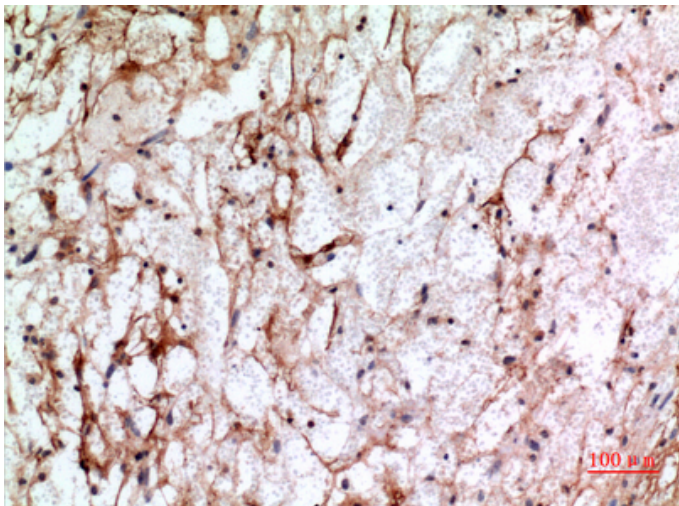
Product Images



Western Blot analysis of MCF7, PC12 cells using CD225 Polyclonal Antibody.. Secondary antibody was diluted at 1:20000



Immunohistochemical analysis of paraffin-embedded human-liver, antibody was diluted at 1:100



Immunohistochemical analysis of paraffin-embedded human-brain, antibody was diluted at 1:100

Immunohistochemical analysis of paraffin-embedded human-brain, antibody was diluted at 1:100

