

JAM-A Polyclonal Antibody

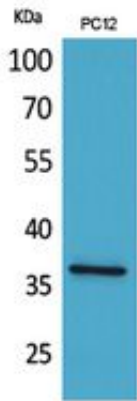
Catalog_no :	AT5479
Applications :	WB,IHC-p,ELISA
Reactivity :	Human,Rat
Category :	抗原抗体
Size :	100µg/50µg/20µg
Gene_name :	F11R
Protein_name :	Junctional adhesion molecule A
Humangene_id :	50848
Humanswissprot_no :	Q9Y624
Mousegene_id :	16456
Mouseswissprot_no :	O88792
Ratgene_id :	116479
Ratswissprot_no :	Q9JHY1
Immunogen :	The antiserum was produced against synthesized peptide derived from the Internal region of human F11R. AA range:191-240
Specificity :	JAM-A Polyclonal Antibody detects endogenous levels of JAM-A protein.
Formulation :	Liquid in PBS containing 50% glycerol, 0.5% BSA and 0.02% sodium azide.
Source :	Rabbit
Dilution :	Western Blot: 1/500 - 1/2000. IHC-p: 1/100-1/300. ELISA: 1/20000. Not yet tested in other applications.
Purification :	The antibody was affinity-purified from rabbit antiserum by affinity-chromatography using epitope-specific immunogen.
Concentration :	1 mg/ml
Storage_stability :	-20°C/1 year
Msds :	MSDS_Antibody.pdf



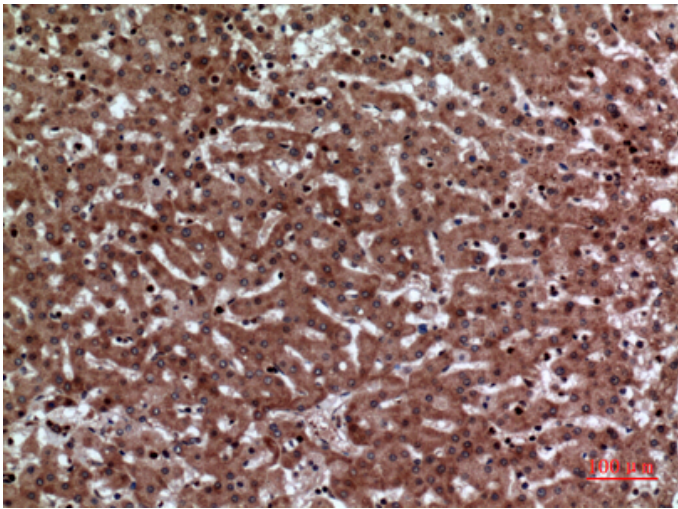
Other_name : F11R; JAM1; JCAM; Junctional adhesion molecule A; JAM-A; Junctional adhesion molecule 1; JAM-1; Platelet F11 receptor; Platelet adhesion molecule 1; PAM-1; CD321

Molecular Weight : 32KD

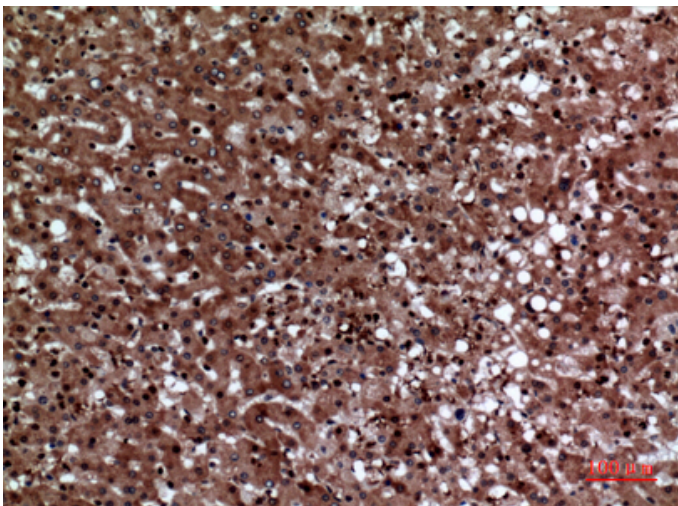
Product Images



Western Blot analysis of PC12 cells using JAM-A Polyclonal Antibody.. Secondary antibody was diluted at 1:20000



Immunohistochemical analysis of paraffin-embedded human-liver, antibody was diluted at 1:100



Immunohistochemical analysis of paraffin-embedded human-liver, antibody was diluted at 1:100

Immunohistochemical analysis of paraffin-embedded human-liver, antibody was diluted at 1:100

