

CD223 Polyclonal Antibody

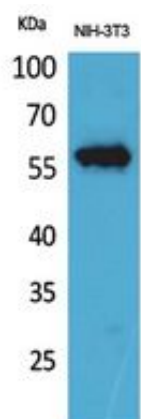
Catalog_no :	AT5480
Applications :	WB,ELISA
Reactivity :	Human
Category :	抗原抗体
Size :	100µg/50µg/20µg
Gene_name :	LAG3
Protein_name :	Lymphocyte activation gene 3 protein
Humangene_id :	3902
Humanswissprot_no :	P18627
Mousegene_id :	16768
Mouseswissprot_no :	Q61790
Ratgene_id :	297596
Ratswissprot_no :	Q5BK54
Immunogen :	The antiserum was produced against synthesized peptide derived from the Internal region of human LAG3. AA range:91-140
Specificity :	CD223 Polyclonal Antibody detects endogenous levels of CD223 protein.
Formulation :	Liquid in PBS containing 50% glycerol, 0.5% BSA and 0.02% sodium azide.
Source :	Rabbit
Dilution :	Western Blot: 1/500 - 1/2000. ELISA: 1/20000. Not yet tested in other applications.
Purification :	The antibody was affinity-purified from rabbit antiserum by affinity-chromatography using epitope-specific immunogen.
Concentration :	1 mg/ml
Storage_stability :	-20°C/1 year
Msds :	MSDS_Antibody.pdf



Other_name : LAG3; FDC; Lymphocyte activation gene 3 protein; LAG-3; Protein FDC; CD223

Molecular Weight : 57KD

Product Images



Western Blot analysis of NIH-3T3 cells using CD223 Polyclonal Antibody.. Secondary antibody was diluted at 1:20000