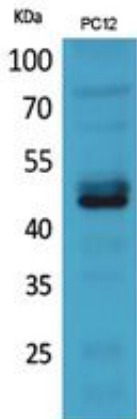


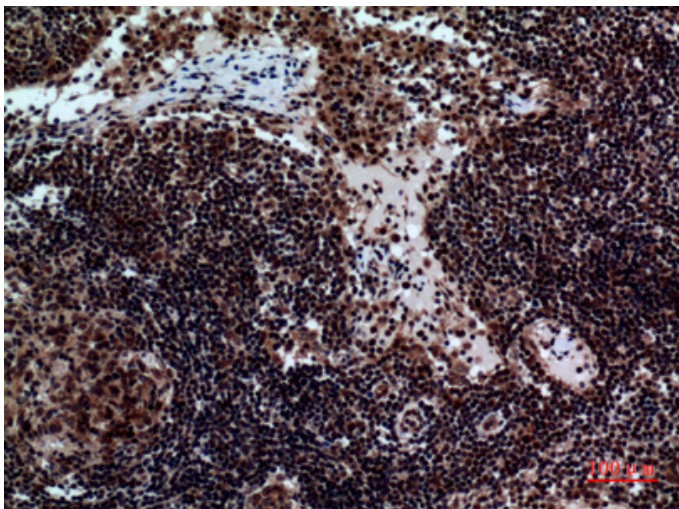
## NKp44 Polyclonal Antibody

Catalog_no :	AT5481
Applications :	WB,IHC-p,ELISA
Reactivity :	Human
Category :	抗原抗体
Size :	100µg/50µg/20µg
Gene_name :	NCR2
Protein_name :	Natural cytotoxicity triggering receptor 2
Humangene_id :	<a href="#">9436</a>
Humanswissprot_no :	<a href="#">O95944</a>
Immunogen :	The antiserum was produced against synthesized peptide derived from the Internal region of human NCR2. AA range:61-110
Specificity :	NKp44 Polyclonal Antibody detects endogenous levels of NKp44 protein.
Formulation :	Liquid in PBS containing 50% glycerol, 0.5% BSA and 0.02% sodium azide.
Source :	Rabbit
Dilution :	Western Blot: 1/500 - 1/2000. IHC-p: 1/100-1/300. ELISA: 1/20000. Not yet tested in other applications.
Purification :	The antibody was affinity-purified from rabbit antiserum by affinity-chromatography using epitope-specific immunogen.
Concentration :	1 mg/ml
Storage_stability :	-20°C/1 year
Msds :	MSDS_Antibody.pdf
Other_name :	NCR2; LY95; Natural cytotoxicity triggering receptor 2; Lymphocyte antigen 95 homolog; NK cell-activating receptor; Natural killer cell p44-related protein; NK-p44; NKp44; CD336
Molecular Weight :	44KD

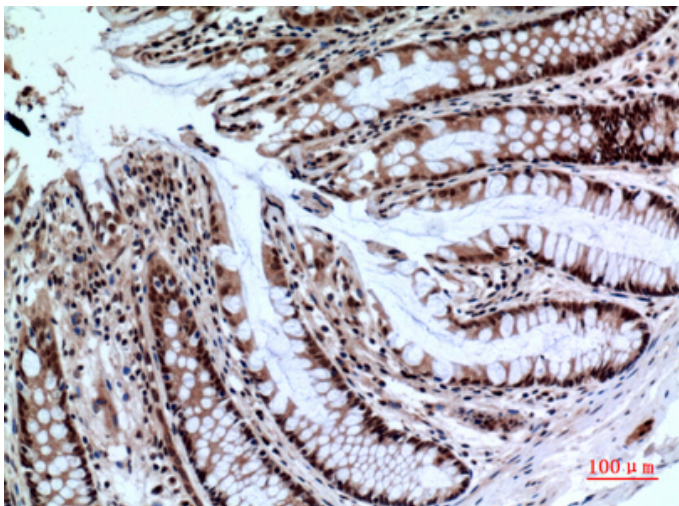
## Product Images



Western Blot analysis of PC-12 cells using NKp44 Polyclonal Antibody.. Secondary antibody was diluted at 1:20000



Immunohistochemical analysis of paraffin-embedded human-Lymph-nodes, antibody was diluted at 1:100



Immunohistochemical analysis of paraffin-embedded human-colon, antibody was diluted at 1:100

Immunohistochemical analysis of paraffin-embedded human-colon, antibody was diluted at 1:100

