

CD316 Polyclonal Antibody

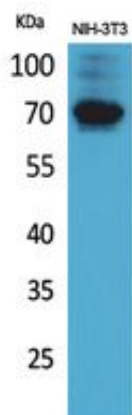
Catalog_no :	AT5482
Applications :	WB,ELISA
Reactivity :	Human,Mouse
Category :	抗原抗体
Size :	100µg/50µg/20µg
Gene_name :	IGSF8
Protein_name :	Immunoglobulin superfamily member 8
Humangene_id :	93185
Humanswissprot_no :	Q969P0
Mousegene_id :	140559
Mouseswissprot_no :	Q8R366
Immunogen :	The antiserum was produced against synthesized peptide derived from the Internal region of human IGSF8. AA range:451-500
Specificity :	CD316 Polyclonal Antibody detects endogenous levels of CD316 protein.
Formulation :	Liquid in PBS containing 50% glycerol, 0.5% BSA and 0.02% sodium azide.
Source :	Rabbit
Dilution :	Western Blot: 1/500 - 1/2000. ELISA: 1/20000. Not yet tested in other applications.
Purification :	The antibody was affinity-purified from rabbit antiserum by affinity-chromatography using epitope-specific immunogen.
Concentration :	1 mg/ml
Storage_stability :	-20°C/1 year
Msds :	MSDS_Antibody.pdf
Other_name :	IGSF8; CD81P3; EWI2; KCT4; Immunoglobulin superfamily member 8; IgSF8; CD81 partner 3; Glu-Trp-Ile EWI motif-containing protein 2; EWI-2; Keratinocytes-associated transmembrane protein 4; KCT-4; LIR-D1; Prostaglandin regulatory-like protein; PGRL; CD316



Molecular
Weight :

65KD

Product Images



Western Blot analysis of NIH-3T3 cells using CD316 Polyclonal Antibody.. Secondary antibody was diluted at 1:20000