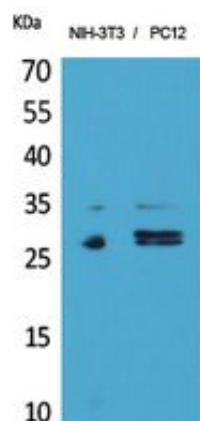




## DcR1 Polyclonal Antibody

Catalog_no :	AT5483
Applications :	WB,ELISA
Reactivity :	Human
Category :	抗原抗体
Size :	100µg/50µg/20µg
Gene_name :	TNFRSF10C
Protein_name :	Tumor necrosis factor receptor superfamily member 10C
Humangene_id :	<a href="#">8794</a>
Humanswissprot_no :	<a href="#">O14798</a>
Immunogen :	The antiserum was produced against synthesized peptide derived from the Internal region of human TNFRSF10C. AA range:11-60
Specificity :	DcR1 Polyclonal Antibody detects endogenous levels of DcR1 protein.
Formulation :	Liquid in PBS containing 50% glycerol, 0.5% BSA and 0.02% sodium azide.
Source :	Rabbit
Dilution :	Western Blot: 1/500 - 1/2000. ELISA: 1/20000. Not yet tested in other applications.
Purification :	The antibody was affinity-purified from rabbit antiserum by affinity-chromatography using epitope-specific immunogen.
Concentration :	1 mg/ml
Storage_stability :	-20°C/1 year
Msds :	MSDS_Antibody.pdf
Other_name :	TNFRSF10C; DCR1; LIT; TRAILR3; TRID; Tumor necrosis factor receptor superfamily member 10C; Antagonist decoy receptor for TRAIL/Apo-2L; Decoy TRAIL receptor without death domainDecoy receptor 1; DcR1; Lymphocyte inhibitor of TRAIL; TNF-related apoptosis-inducing ligand receptor 3; TRAIL receptor 3; TRAIL-R3; TRAIL receptor without an intracellular domain; CD263
Molecular Weight :	27KD

## Product Images



Western Blot analysis of NIH-3T3, PC12 cells using DcR1 Polyclonal Antibody.. Secondary antibody was diluted at 1:20000