

HRP-3 Polyclonal Antibody

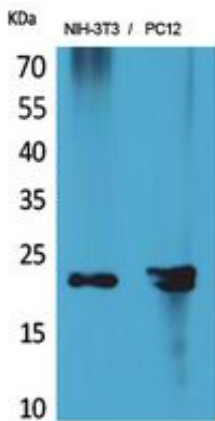
Catalog_no :	<u>AT5484</u>
Applications :	<u>WB,IHC-p,ELISA</u>
Reactivity :	<u>Human,Mouse,Rat</u>
Category :	<u>抗原抗体</u>
Size :	<u>100µg/50µg/20µg</u>
Gene_name :	<u>HDGFRP3</u>
Protein_name :	<u>Hepatoma-derived growth factor-related protein 3</u>
Humangene_id	<u>50810</u>
:	<u></u>
Humanswissprot	<u>Q9Y3E1</u>
_no :	<u></u>
Mousegene_id :	<u>29877</u>
Mouseswissprot	<u>Q9JMG7</u>
_no :	<u></u>
Ratgene_id :	<u>252941</u>
Ratswissprot_no	<u>Q923W4</u>
:	<u></u>
Immunogen :	<u>The antiserum was produced against synthesized peptide derived from the Internal region of human HDGFRP3. AA range:131-180</u>
Specificity :	<u>HRP-3 Polyclonal Antibody detects endogenous levels of HRP-3 protein.</u>
Formulation :	<u>Liquid in PBS containing 50% glycerol, 0.5% BSA and 0.02% sodium azide.</u>
Source :	<u>Rabbit</u>
Dilution :	<u>Western Blot: 1/500 - 1/2000. IHC-p: 1/100-1/300. ELISA: 1/20000. Not yet tested in other applications.</u>
Purification :	<u>The antibody was affinity-purified from rabbit antiserum by affinity-chromatography using epitope-specific immunogen.</u>
Concentration :	<u>1 mg/ml</u>
Storage_stability	<u>-20°C/1 year</u>
:	<u></u>
Msds :	<u>MSDS_Antibody.pdf</u>



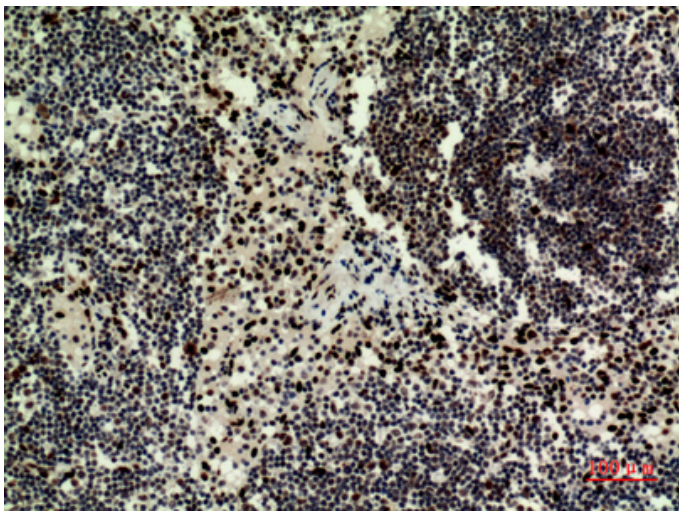
Other_name : HDGFRP3; HDGF2; CGI-142; Hepatoma-derived growth factor-related protein 3; HRP-3; Hepatoma-derived growth factor 2; HDGF-2

Molecular Weight : 23KD

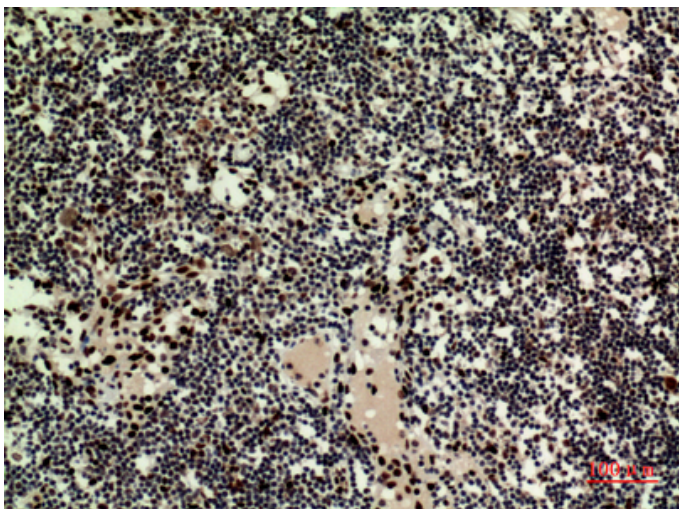
Product Images



Western Blot analysis of NIH-3T3, PC12 cells using HRP-3 Polyclonal Antibody.. Secondary antibody was diluted at 1:20000



Immunohistochemical analysis of paraffin-embedded human-Lymph-nodes, antibody was diluted at 1:100



Immunohistochemical analysis of paraffin-embedded human-Lymph-nodes, antibody was diluted at 1:100