

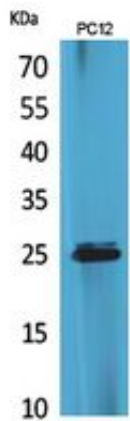
CMTM5 Polyclonal Antibody

Catalog_no :	<u>AT5485</u>
Applications :	<u>WB,IHC-p,ELISA</u>
Reactivity :	<u>Human</u>
Category :	<u>抗原抗体</u>
Size :	<u>100µg/50µg/20µg</u>
Gene_name :	<u>CMTM5</u>
Protein_name :	<u>CKLF-like MARVEL transmembrane domain-containing protein 5</u>
Humangene_id :	<u>116173</u>
Humanswissprot_no :	<u>Q96DZ9</u>
Mousegene_id :	<u>67272</u>
Mouseswissprot_no :	<u>Q9D6G9</u>
Immunogen :	<u>The antiserum was produced against synthesized peptide derived from the N-terminal region of human CMTM5. AA range:1-50</u>
Specificity :	<u>CMTM5 Polyclonal Antibody detects endogenous levels of CMTM5 protein.</u>
Formulation :	<u>Liquid in PBS containing 50% glycerol, 0.5% BSA and 0.02% sodium azide.</u>
Source :	<u>Rabbit</u>
Dilution :	<u>Western Blot: 1/500 - 1/2000. IHC-p: 1/100-1/300. ELISA: 1/20000. Not yet tested in other applications.</u>
Purification :	<u>The antibody was affinity-purified from rabbit antiserum by affinity-chromatography using epitope-specific immunogen.</u>
Concentration :	<u>1 mg/ml</u>
Storage_stability :	<u>-20°C/1 year</u>
Msds :	<u>MSDS_Antibody.pdf</u>
Other_name :	<u>CMTM5; CKLFSF5; CKLF-like MARVEL transmembrane domain-containing protein 5; Chemokine-like factor superfamily member 5</u>
Molecular	<u>25KD</u>

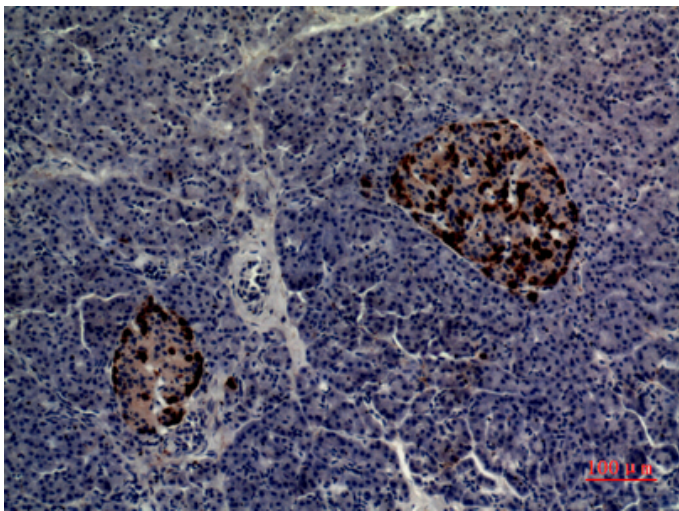


Weight :

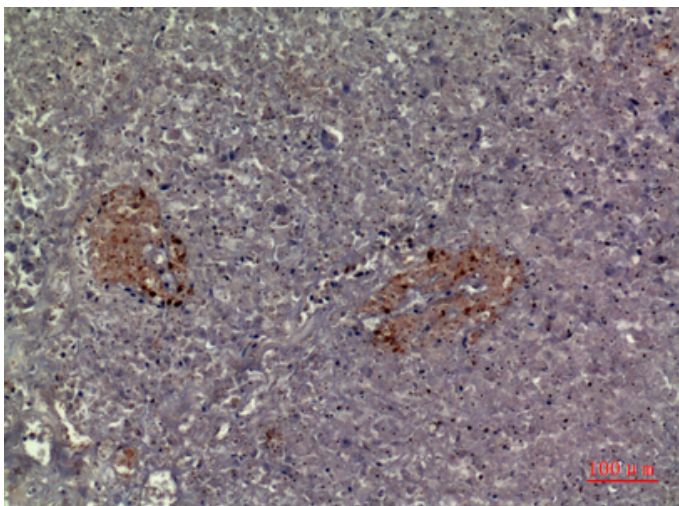
Product Images



Western Blot analysis of PC12 cells using CMTM5 Polyclonal Antibody.. Secondary antibody was diluted at 1:20000



Immunohistochemical analysis of paraffin-embedded human-pancreas, antibody was diluted at 1:100



Immunohistochemical analysis of paraffin-embedded human-pancreas, antibody was diluted at 1:100