

## IL-33 Polyclonal Antibody

Catalog_no :	<u>AT5487</u>
Applications :	<u>WB,IHC-p,ELISA</u>
Reactivity :	<u>Human</u>
Category :	<u>抗原抗体</u>
Size :	<u>100µg/50µg/20µg</u>
Gene_name :	<u>IL33</u>
Protein_name :	<u>Interleukin-33</u>
Humangene_id :	<u><a href="#">90865</a></u>
Humanswissprot_no :	<u><a href="#">O95760</a></u>
Mousegene_id :	<u><a href="#">77125</a></u>
Mouseswissprot_no :	<u><a href="#">Q8BVZ5</a></u>
Ratgene_id :	<u><a href="#">361749</a></u>
Ratswissprot_no :	<u><a href="#">Q66H70</a></u>
Immunogen :	<u>The antiserum was produced against synthesized peptide derived from the Internal region of human IL33. AA range:121-170</u>
Specificity :	<u>IL-33 Polyclonal Antibody detects endogenous levels of IL-33 protein.</u>
Formulation :	<u>Liquid in PBS containing 50% glycerol, 0.5% BSA and 0.02% sodium azide.</u>
Source :	<u>Rabbit</u>
Dilution :	<u>Western Blot: 1/500 - 1/2000. IHC-p: 1/100-1/300. ELISA: 1/20000. Not yet tested in other applications.</u>
Purification :	<u>The antibody was affinity-purified from rabbit antiserum by affinity-chromatography using epitope-specific immunogen.</u>
Concentration :	<u>1 mg/ml</u>
Storage_stability :	<u>-20°C/1 year</u>
Msds :	<u>MSDS_Antibody.pdf</u>



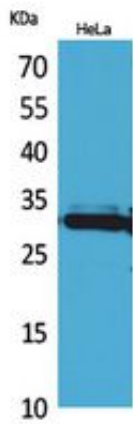
Other\_name : IL33; C9orf26; IL1F11; NFHEV; Interleukin-33; IL-33; Interleukin-1 family member 11; IL-1F11; Nuclear factor from high endothelial venules; NF-HEV

---

Molecular Weight : 31KD

---

## Product Images



Western Blot analysis of HeLa cells using IL-33 Polyclonal Antibody.. Secondary antibody was diluted at 1:20000

