

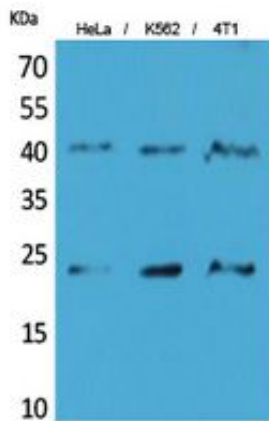
TMEM173 Polyclonal Antibody

Catalog_no :	AT5488
Applications :	WB,IHC-p,ELISA
Reactivity :	Human,Mouse
Category :	抗原抗体
Size :	100µg/50µg/20µg
Gene_name :	TMEM173
Protein_name :	Transmembrane protein 173
Humangene_id :	340061
Humanswissprot_no :	Q86WV6
Mousegene_id :	72512
Mouseswissprot_no :	Q3TBT3
Immunogen :	Synthesized peptide derived from Transmembrane protein 173 at AA range: 301-350
Specificity :	TMEM173 Polyclonal Antibody detects endogenous levels of TMEM173 protein.
Formulation :	Liquid in PBS containing 50% glycerol, 0.5% BSA and 0.02% sodium azide.
Source :	Rabbit
Dilution :	Western Blot: 1/500 - 1/2000. IHC-p: 1/100-1/300. ELISA: 1/20000. Not yet tested in other applications.
Purification :	The antibody was affinity-purified from rabbit antiserum by affinity-chromatography using epitope-specific immunogen.
Concentration :	1 mg/ml
Storage_stability :	-20°C/1 year
Msds :	MSDS_Antibody.pdf
Other_name :	TMEM173; ERIS; MITA; STING; Transmembrane protein 173; Endoplasmic reticulum interferon stimulator; ERIS; Mediator of IRF3 activation; hMITA; Stimulator of interferon genes protein; hSTING
Molecular	42KD,23KD

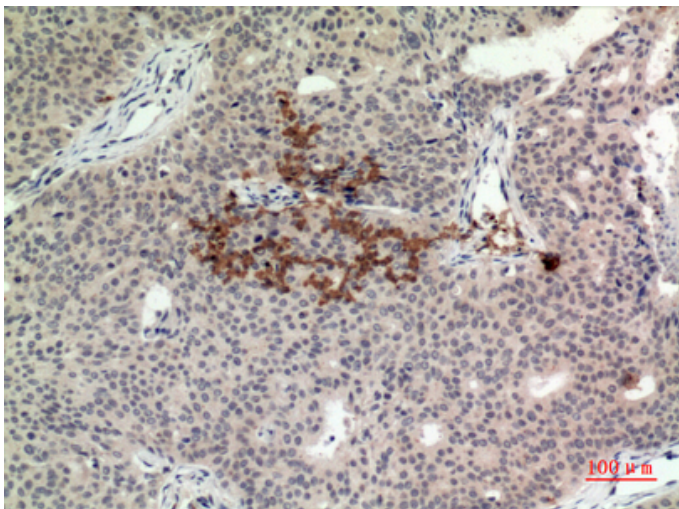


Weight :

Product Images



Western Blot analysis of HeLa, K562, 4T1 cells using TMEM173 Polyclonal Antibody.. Secondary antibody was diluted at 1:20000



Immunohistochemical analysis of paraffin-embedded human-Breast-cancer, antibody was diluted at 1:100