



## POLR3G Polyclonal Antibody

Catalog_no :	AT5489
Applications :	WB,IHC-p,ELISA
Reactivity :	Human,Mouse
Category :	抗原抗体
Size :	100µg/50µg/20µg
Gene_name :	POLR3G
Protein_name :	DNA-directed RNA polymerase III subunit RPC7
Humangene_id :	<a href="#">10622</a>
Humanswissprot_no :	<a href="#">O15318</a>
Mousegene_id :	<a href="#">67486</a>
Mouseswissprot_no :	<a href="#">Q6NXY9</a>
Immunogen :	The antiserum was produced against synthesized peptide derived from the Internal region of human POLR3G. AA range:151-200
Specificity :	POLR3G Polyclonal Antibody detects endogenous levels of POLR3G protein.
Formulation :	Liquid in PBS containing 50% glycerol, 0.5% BSA and 0.02% sodium azide.
Source :	Rabbit
Dilution :	Western Blot: 1/500 - 1/2000. IHC-p: 1/100-1/300. ELISA: 1/20000. Not yet tested in other applications.
Purification :	The antibody was affinity-purified from rabbit antiserum by affinity-chromatography using epitope-specific immunogen.
Concentration :	1 mg/ml
Storage_stability :	-20°C/1 year
Msds :	MSDS_Antibody.pdf
Other_name :	POLR3G; DNA-directed RNA polymerase III subunit RPC7; RNA polymerase III subunit C7; DNA-directed RNA polymerase III subunit G; RNA polymerase III 32 kDa subunit; RPC32

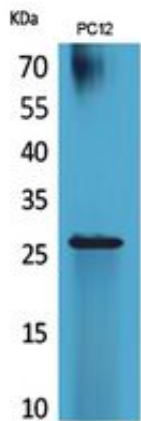


Molecular  
Weight :

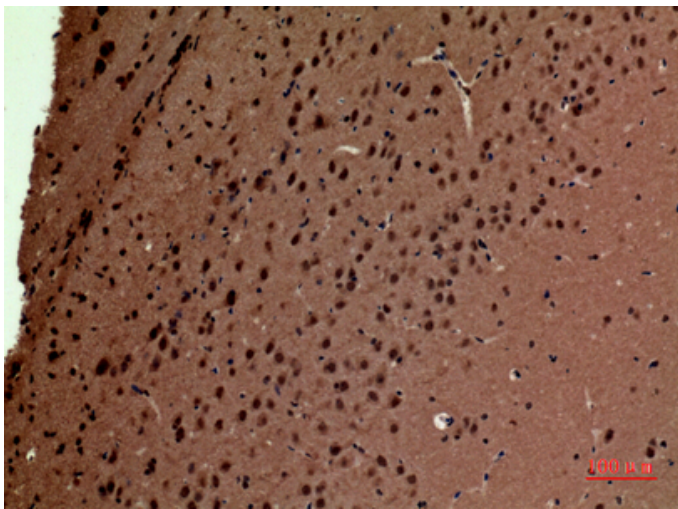
26KD

---

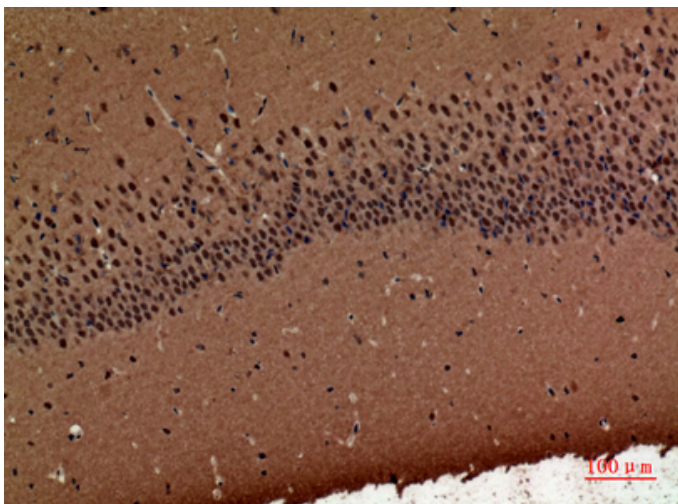
## Product Images



Western Blot analysis of PC12 cells using POLR3G Polyclonal Antibody.. Secondary antibody was diluted at 1:20000 cells nucleus extracted by Minute TM Cytoplasmic and Nuclear Fractionation kit (SC-003, Inventbiotech, MN, USA).



Immunohistochemical analysis of paraffin-embedded mouse-brain, antibody was diluted at 1:100



Immunohistochemical analysis of paraffin-embedded mouse-brain, antibody was diluted at 1:100