

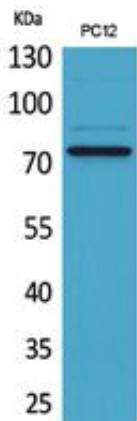
SAMHD1 Polyclonal Antibody

Catalog_no :	AT5491
Applications :	WB,IHC-p,ELISA
Reactivity :	Human
Category :	抗原抗体
Size :	100µg/50µg/20µg
Gene_name :	SAMHD1
Protein_name :	SAM domain and HD domain-containing protein 1
Humangene_id :	25939
Humanswissprot_no :	Q9Y3Z3
Mousegene_id :	56045
Mouseswissprot_no :	Q60710
Immunogen :	The antiserum was produced against synthesized peptide derived from the Internal region of human SAMHD1. AA range:431-480
Specificity :	SAMHD1 Polyclonal Antibody detects endogenous levels of SAMHD1 protein.
Formulation :	Liquid in PBS containing 50% glycerol, 0.5% BSA and 0.02% sodium azide.
Source :	Rabbit
Dilution :	Western Blot: 1/500 - 1/2000. IHC-p: 1/100-1/300. ELISA: 1/20000. Not yet tested in other applications.
Purification :	The antibody was affinity-purified from rabbit antiserum by affinity-chromatography using epitope-specific immunogen.
Concentration :	1 mg/ml
Storage_stability :	-20°C/1 year
Msds :	MSDS_Antibody.pdf
Other_name :	SAMHD1; MOP5; SAM domain and HD domain-containing protein 1; Dendritic cell-derived IFNG-induced protein; DCIP; Monocyte protein 5; MOP-5
Molecular	72KD

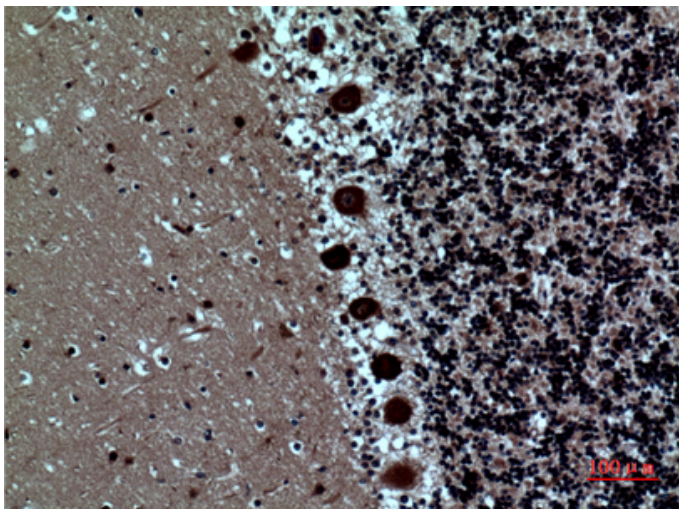


Weight :

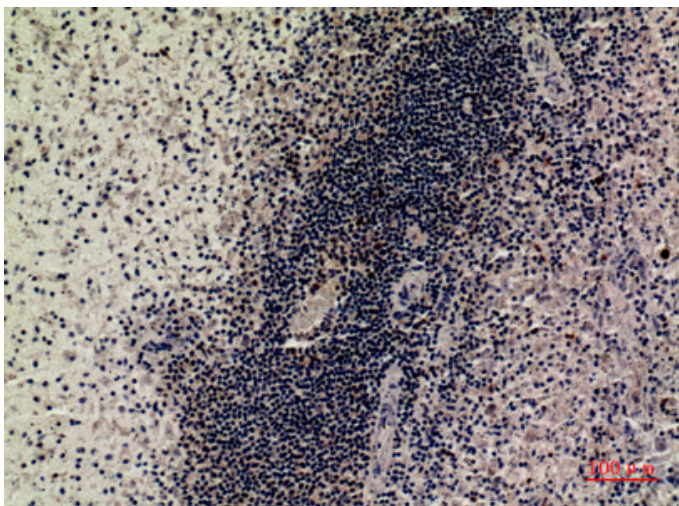
Product Images



Western Blot analysis of PC12 cells using SAMHD1 Polyclonal Antibody.. Secondary antibody was diluted at 1:20000 cells nucleus extracted by Minute TM Cytoplasmic and Nuclear Fractionation kit (SC-003, Inventbiotech, MN, USA).

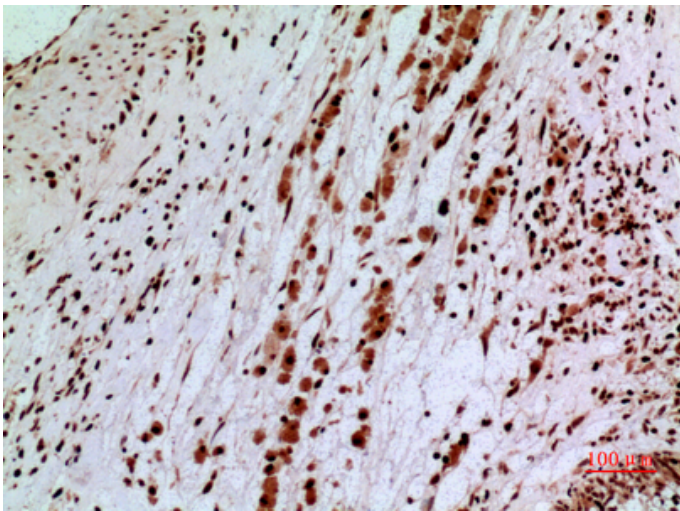
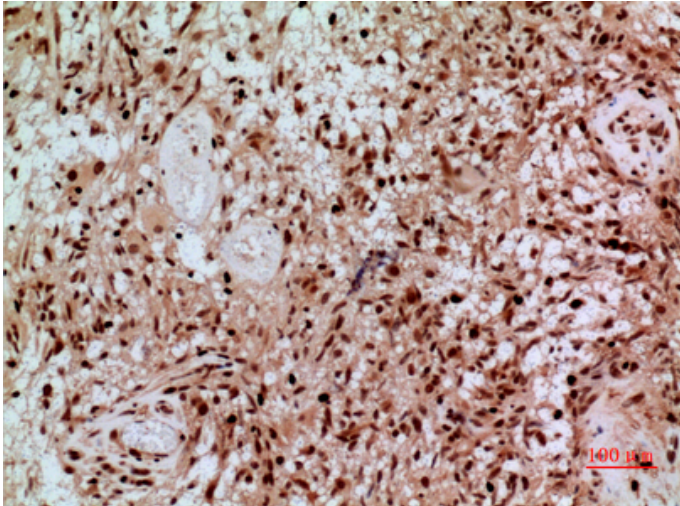


Immunohistochemical analysis of paraffin-embedded human-brain, antibody was diluted at 1:100



Immunohistochemical analysis of paraffin-embedded human-spleen, antibody was diluted at 1:100

Immunohistochemical analysis of paraffin-embedded human-brain, antibody was diluted at 1:100



Immunohistochemical analysis of paraffin-embedded human-brain, antibody was diluted at 1:100