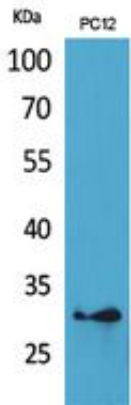


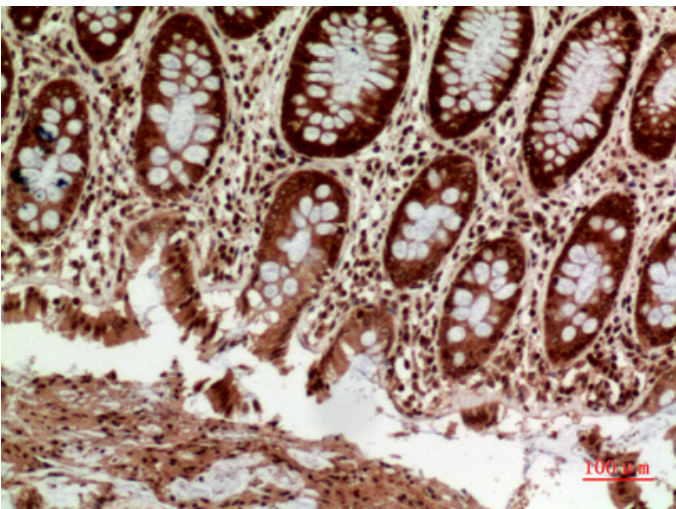
## HLA-DQB1/2 Polyclonal Antibody

Catalog_no :	AT5492
Applications :	WB,IHC-p,ELISA
Reactivity :	Human
Category :	抗原抗体
Size :	100µg/50µg/20µg
Gene_name :	HLA-DQB1/HLA-DQB2
Protein_name :	HLA class II histocompatibility antigen DQ beta 1 chain/HLA class II histocompatibility antigen DQ beta 2 chain
Humangene_id :	<a href="#">100507714</a>
Humanswissprot_no :	<a href="#">P01920/P05538</a>
Immunogen :	The antiserum was produced against synthesized peptide derived from the Internal region of human HLA-DQB1/HLA-DQB2. AA range:131-180
Specificity :	HLA-DQB1/2 Polyclonal Antibody detects endogenous levels of HLA-DQB1/2 protein.
Formulation :	Liquid in PBS containing 50% glycerol, 0.5% BSA and 0.02% sodium azide.
Source :	Rabbit
Dilution :	Western Blot: 1/500 - 1/2000. IHC-p: 1/100-1/300. ELISA: 1/20000. Not yet tested in other applications.
Purification :	The antibody was affinity-purified from rabbit antiserum by affinity-chromatography using epitope-specific immunogen.
Concentration :	1 mg/ml
Storage_stability :	-20°C/1 year
Msds :	MSDS_Antibody.pdf
Other_name :	HLA-DQB1; HLA-DQB; HLA class II histocompatibility antigen, DQ beta 1 chain; MHC class II antigen DQB1; HLA-DQB2; HLA-DXB; HLA class II histocompatibility antigen, DQ beta 2 chainHLA class II histocompatibility antigen, DX beta chain; MHC class II antigen DQB2
Molecular Weight :	30KD

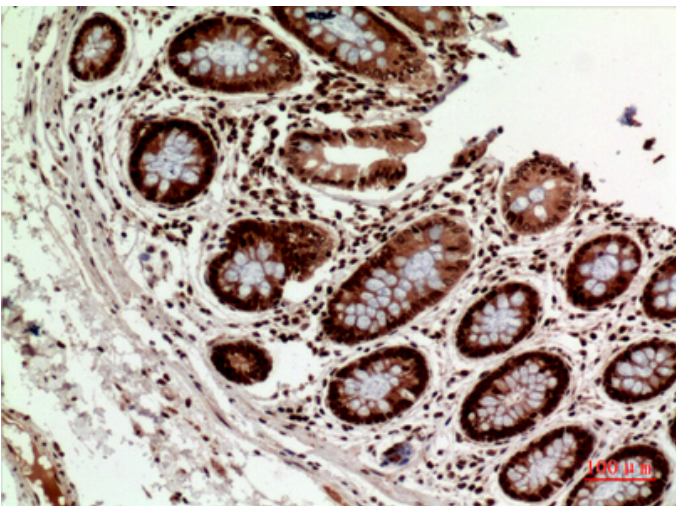
## Product Images



Western Blot analysis of PC12 cells using HLA-DQB1/2 Polyclonal Antibody.. Secondary antibody was diluted at 1:20000



Immunohistochemical analysis of paraffin-embedded human-colon, antibody was diluted at 1:100



Immunohistochemical analysis of paraffin-embedded human-colon, antibody was diluted at 1:100

Immunohistochemical analysis of paraffin-embedded human-spleen, antibody was diluted at 1:100

