

UBA1 Polyclonal Antibody

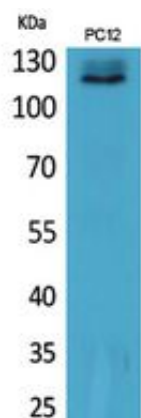
Catalog_no :	AT5493
Applications :	WB,ELISA
Reactivity :	Human,Mouse,Rat
Category :	抗原抗体
Size :	100µg/50µg/20µg
Gene_name :	UBA1
Protein_name :	Ubiquitin-like modifier-activating enzyme 1
Humangene_id :	7317
Humanswissprot_no :	P22314
Mousegene_id :	22201
Mouseswissprot_no :	Q02053
Ratgene_id :	314432
Ratswissprot_no :	Q5U300
Immunogen :	The antiserum was produced against synthesized peptide derived from the N-terminal region of human UBA1. AA range:91-140
Specificity :	UBA1 Polyclonal Antibody detects endogenous levels of UBA1 protein.
Formulation :	Liquid in PBS containing 50% glycerol, 0.5% BSA and 0.02% sodium azide.
Source :	Rabbit
Dilution :	Western Blot: 1/500 - 1/2000. ELISA: 1/20000. Not yet tested in other applications.
Purification :	The antibody was affinity-purified from rabbit antiserum by affinity-chromatography using epitope-specific immunogen.
Concentration :	1 mg/ml
Storage_stability :	-20°C/1 year
Msds :	MSDS_Antibody.pdf



Other_name : UBA1; A1S9T; UBE1; Ubiquitin-like modifier-activating enzyme 1; Protein A1S9; Ubiquitin-activating enzyme E1

Molecular Weight : 118KD

Product Images



Western Blot analysis of PC12 cells using UBA1 Polyclonal Antibody.. Secondary antibody was diluted at 1:20000