

EF-1 α 1/2 Polyclonal Antibody

Catalog_no :	<u>AT5494</u>
Applications :	<u>WB,ELISA</u>
Reactivity :	<u>Human,Mouse,Rat</u>
Category :	<u>抗原抗体</u>
Size :	<u>100μg/50μg/20μg</u>
Gene_name :	<u>EEF1A1/EEF1A2/EEF1A1P5</u>
Protein_name :	<u>Elongation factor 1-alpha 1/Elongation factor 1-alpha 2/Putative elongation factor 1-alpha-like 3</u>
Humangene_id :	<u>1915/1917</u>
Humanswissprot_no :	<u>P68104/Q05639/Q5VTE0</u>
Mousegene_id :	<u>13627/13628</u>
Ratgene_id :	<u>171361/24799</u>
Ratswissprot_no :	<u>P62630/P62632</u>
Immunogen :	<u>Synthesized peptide derived from the N-terminal region of human EF-1 α1/2.</u>
Specificity :	<u>EF-1 α1/2 Polyclonal Antibody detects endogenous levels of EF-1 α1/2 protein.</u>
Formulation :	<u>Liquid in PBS containing 50% glycerol, 0.5% BSA and 0.02% sodium azide.</u>
Source :	<u>Rabbit</u>
Dilution :	<u>Western Blot: 1/500 - 1/2000. ELISA: 1/20000. Not yet tested in other applications.</u>
Purification :	<u>The antibody was affinity-purified from rabbit antiserum by affinity-chromatography using epitope-specific immunogen.</u>
Concentration :	<u>1 mg/ml</u>
Storage_stability :	<u>-20°C/1 year</u>
Msds :	<u>MSDS_Antibody.pdf</u>
Other_name :	<u>EEF1A1; EEF1A; EF1A; LENG7; Elongation factor 1-alpha 1; EF-1-alpha-1; Elongation factor Tu; EF-Tu; Eukaryotic elongation factor 1 A-1; eEF1A-1; Leukocyte receptor cluster member 7; EEF1A2; EEF1AL; STN; Elongation factor 1-alpha 2; EF-1-alpha-2; Eukaryotic</u>

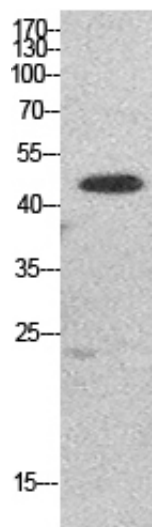


elongation factor 1 A-2; eEF1A-2; Statin-S1; EEF1A1P5; EEF1AL3; Putative elongation factor 1-alpha-like 3; EF-1-alpha-like 3; Eukaryotic elongation factor 1 A-like 3; eEF1A-like 3; Eukaryotic translation elongation factor 1 alpha-1 pseudogene 5

Molecular
Weight :

50KD

Product Images



Western Blot analysis of HepG2 cells using EF-1 α 1/2 Polyclonal Antibody.. Secondary antibody was diluted at 1:20000