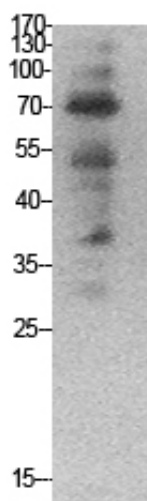


## Ub Polyclonal Antibody

Catalog_no :	AT5498
Applications :	WB,ELISA
Reactivity :	Human,Mouse,Rat
Category :	抗原抗体
Size :	100µg/50µg/20µg
Gene_name :	UBA52/RPS27A/UBB/UBC
Protein_name :	Ubiquitin
Humanswissprot_no :	<a href="#">P62987/P62979/P0CG47/P0CG48</a>
Immunogen :	Synthesized peptide derived from the N-terminal region of human Ub.
Specificity :	Ub Polyclonal Antibody detects endogenous levels of Ub protein.
Formulation :	Liquid in PBS containing 50% glycerol, 0.5% BSA and 0.02% sodium azide.
Source :	Rabbit
Dilution :	Western Blot: 1/500 - 1/2000. ELISA: 1/20000. Not yet tested in other applications.
Purification :	The antibody was affinity-purified from rabbit antiserum by affinity-chromatography using epitope-specific immunogen.
Concentration :	1 mg/ml
Storage_stability :	-20°C/1 year
Msds :	MSDS_Antibody.pdf
Other_name :	UBB; Polyubiquitin-B; UBC; Polyubiquitin-C; RPS27A; UBA80; UBCEP1; Ubiquitin-40S ribosomal protein S27a; Ubiquitin carboxyl extension protein 80; UBA52; UBCEP2; Ubiquitin-60S ribosomal protein L40; CEP52; Ubiquitin A-52 residue ribosomal protein fusion product 1
Molecular Weight :	80 50KD

## Product Images



Western Blot analysis of HepG2, HeLa cells using Ub Polyclonal Antibody.. Secondary antibody was diluted at 1:20000