

Histone H2A Polyclonal Antibody

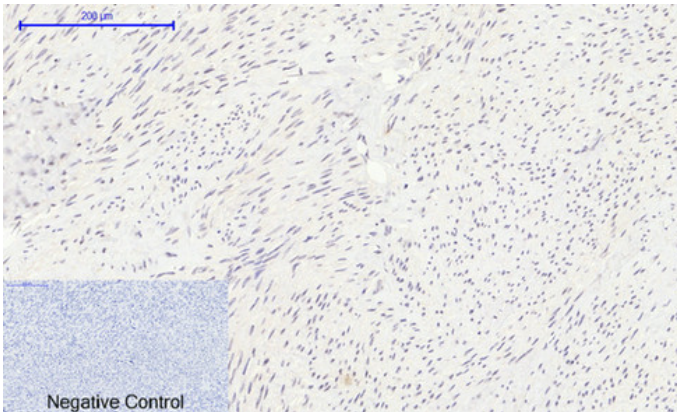
| | |
|---------------------|--|
| Catalog_no : | AT5500 |
| Applications : | WB,IHC-p,ELISA |
| Reactivity : | Human,Mouse,Rat |
| Category : | 抗原抗体 |
| Size : | 100µg/50µg/20µg |
| Gene_name : | HIST1H2AG/HIST1H2AI/HIST1H2AK/HIST1H2AL/HIST1H2AM |
| Protein_name : | Histone H2A type 1 |
| Humangene_id : | 8329/8330/8332/8336/8969 |
| Humanswissprot_no : | P0C0S8 |
| Mousegene_id : | 319164 |
| Mouseswissprot_no : | P22752 |
| Ratswissprot_no : | P02262 |
| Immunogen : | Synthesized peptide derived from the Internal region of human Histone H2A. |
| Specificity : | Histone H2A Polyclonal Antibody detects endogenous levels of Histone H2A protein. |
| Formulation : | Liquid in PBS containing 50% glycerol, 0.5% BSA and 0.02% sodium azide. |
| Source : | Rabbit |
| Dilution : | Western Blot: 1/500 - 1/2000. IHC-p: 1/100-1/300. ELISA: 1/20000. Not yet tested in other applications. |
| Purification : | The antibody was affinity-purified from rabbit antiserum by affinity-chromatography using epitope-specific immunogen. |
| Concentration : | 1 mg/ml |
| Storage_stability : | -20°C/1 year |
| Msds : | MSDS_Antibody.pdf |
| Other_name : | HIST1H2AG; H2AFP; HIST1H2AI; H2AFC; HIST1H2AK; H2AFD; HIST1H2AL; H2AFI; HIST1H2AM; H2AFN; Histone H2A type 1; H2A.1; Histone H2A/p |



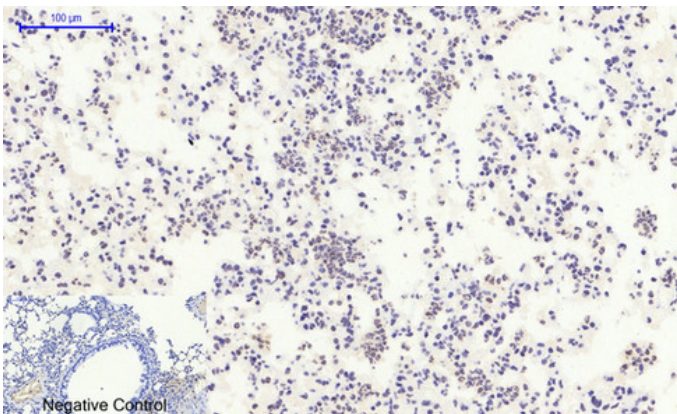
Molecular
Weight :

15KD

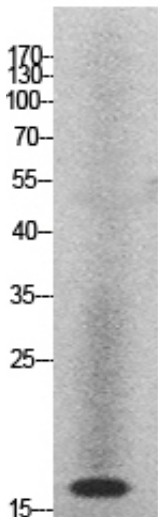
Product Images



Immunohistochemical analysis of paraffin-embedded Human-uterus tissue. 1, Histone H2A Polyclonal Antibody was diluted at 1:200 (4°C, overnight). 2, Sodium citrate pH 6.0 was used for antibody retrieval (>98°C, 20min). 3, Secondary antibody was diluted at 1:200 (room temperature, 30min). Negative control was used by secondary antibody only.



Immunohistochemical analysis of paraffin-embedded Mouse-lung tissue. 1, Histone H2A Polyclonal Antibody was diluted at 1:200 (4°C, overnight). 2, Sodium citrate pH 6.0 was used for antibody retrieval (>98°C, 20min). 3, Secondary antibody was diluted at 1:200 (room temperature, 30min). Negative control was used by secondary antibody only.



Western Blot analysis of HeLa cells using Histone H2A Polyclonal Antibody. Secondary antibody was diluted at 1:20000. Cells nucleus extracted by Minute TM Cytoplasmic and Nuclear Fractionation kit (SC-003, Invent Biotech, MN, USA).

Immunohistochemical analysis of paraffin-embedded human-colon-cancer, antibody was diluted at 1:100

