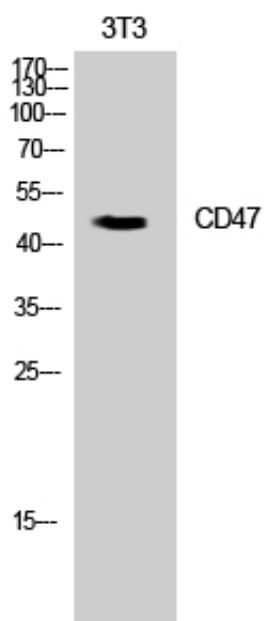


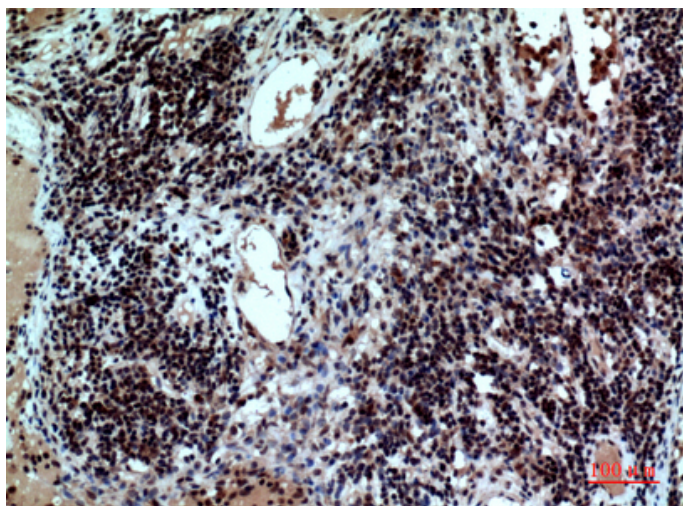
## CD47 Polyclonal Antibody

Catalog_no :	AT5509
Applications :	WB,IHC-p,ELISA
Reactivity :	Human
Category :	抗原抗体
Size :	100µg/50µg/20µg
Gene_name :	CD47
Protein_name :	Leukocyte surface antigen CD47
Humangene_id	<a href="#">961</a>
:	
Humanswissprot	<a href="#">Q08722</a>
_no :	
Immunogen :	The antiserum was produced against synthesized peptide derived from the Internal region of human CD47. AA range:61-110
Specificity :	CD47 Polyclonal Antibody detects endogenous levels of CD47 protein.
Formulation :	Liquid in PBS containing 50% glycerol, 0.5% BSA and 0.02% sodium azide.
Source :	Rabbit
Dilution :	Western Blot: 1/500 - 1/2000. IHC-p: 1/100-1/300. ELISA: 1/20000. Not yet tested in other applications.
Purification :	The antibody was affinity-purified from rabbit antiserum by affinity-chromatography using epitope-specific immunogen.
Concentration :	1 mg/ml
Storage_stability	-20°C/1 year
:	
Msds :	MSDS_Antibody.pdf
Other_name :	CD47; MER6; Leukocyte surface antigen CD47; Antigenic surface determinant protein OA3; Integrin-associated protein; IAP; Protein MER6; CD47
Molecular Weight :	35KD

## Product Images



Western Blot analysis of 3T3 cells using CD47 Polyclonal Antibody. Secondary antibody was diluted at 1:20000



Immunohistochemical analysis of paraffin-embedded human-Lymph-nodes, antibody was diluted at 1:100