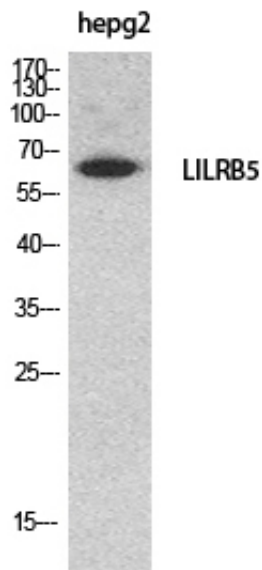


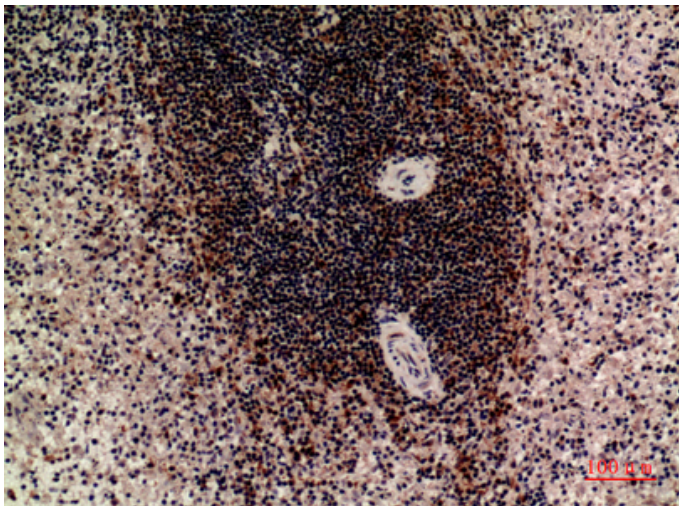
CD85c Polyclonal Antibody

Catalog_no :	AT5510
Applications :	WB,IHC-p,ELISA
Reactivity :	Human
Category :	抗原抗体
Size :	100µg/50µg/20µg
Gene_name :	LILRB5
Protein_name :	Leukocyte immunoglobulin-like receptor subfamily B member 5
Humangene_id :	10990
Humanswissprot_no :	O75023
Immunogen :	The antiserum was produced against synthesized peptide derived from the N-terminal region of human LILRB5. AA range:21-70
Specificity :	CD85c Polyclonal Antibody detects endogenous levels of CD85c protein.
Formulation :	Liquid in PBS containing 50% glycerol, 0.5% BSA and 0.02% sodium azide.
Source :	Rabbit
Dilution :	Western Blot: 1/500 - 1/2000. IHC-p: 1/100-1/300. ELISA: 1/20000. Not yet tested in other applications.
Purification :	The antibody was affinity-purified from rabbit antiserum by affinity-chromatography using epitope-specific immunogen.
Concentration :	1 mg/ml
Storage_stability :	-20°C/1 year
Msds :	MSDS_Antibody.pdf
Other_name :	LILRB5; LIR8; Leukocyte immunoglobulin-like receptor subfamily B member 5; CD85 antigen-like family member C; Leukocyte immunoglobulin-like receptor 8; LIR-8; CD85c
Molecular Weight :	65KD

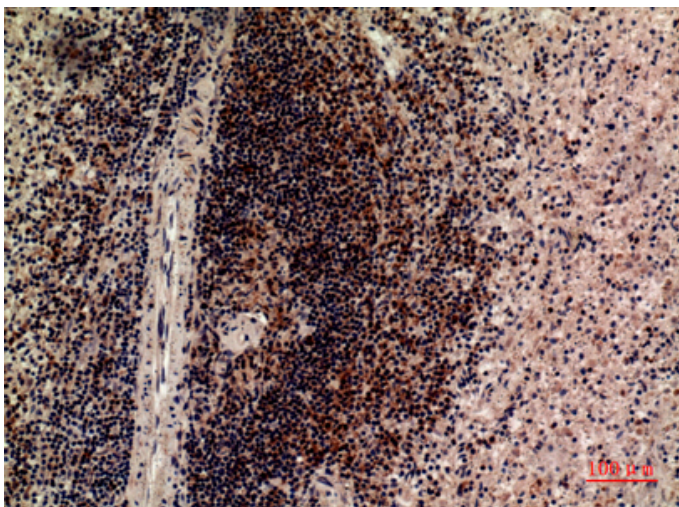
Product Images



Western Blot analysis of HepG2 cells using CD85c Polyclonal Antibody.. Secondary antibody was diluted at 1:20000



Immunohistochemical analysis of paraffin-embedded human-spleen, antibody was diluted at 1:100



Immunohistochemical analysis of paraffin-embedded human-spleen, antibody was diluted at 1:100