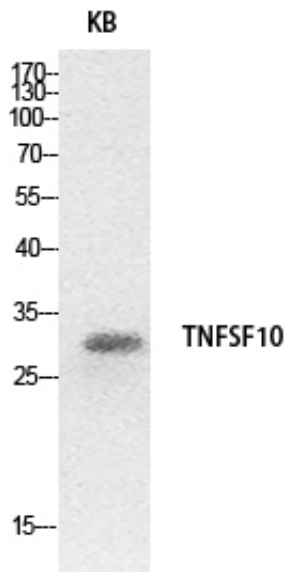


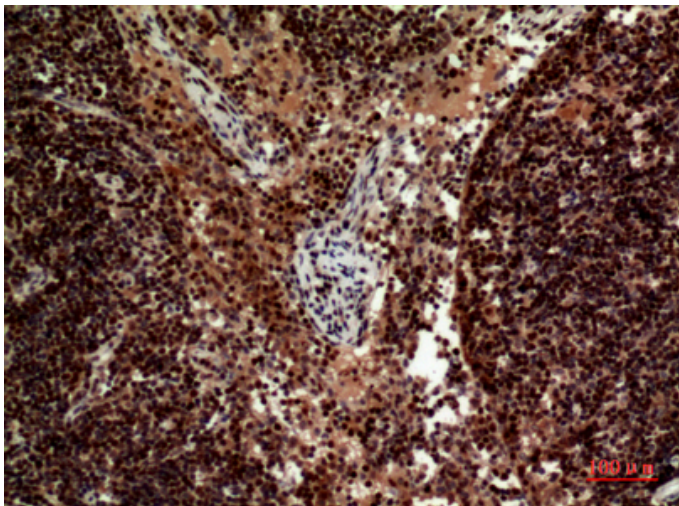
## TRAIL Polyclonal Antibody

Catalog_no :	AT5511
Applications :	WB,IHC-p,ELISA
Reactivity :	Human
Category :	抗原抗体
Size :	100µg/50µg/20µg
Gene_name :	TNFSF10
Protein_name :	Tumor necrosis factor ligand superfamily member 10
Humangene_id :	<a href="#">8743</a>
Humanswissprot_no :	<a href="#">P50591</a>
Immunogen :	The antiserum was produced against synthesized peptide derived from the Internal region of human TNFSF10. AA range:31-80
Specificity :	TRAIL Polyclonal Antibody detects endogenous levels of TRAIL protein.
Formulation :	Liquid in PBS containing 50% glycerol, 0.5% BSA and 0.02% sodium azide.
Source :	Rabbit
Dilution :	Western Blot: 1/500 - 1/2000. IHC-p: 1/100-1/300. ELISA: 1/20000. Not yet tested in other applications.
Purification :	The antibody was affinity-purified from rabbit antiserum by affinity-chromatography using epitope-specific immunogen.
Concentration :	1 mg/ml
Storage_stability :	-20°C/1 year
Msds :	MSDS_Antibody.pdf
Other_name :	TNFSF10; APO2L; TRAIL; Tumor necrosis factor ligand superfamily member 10; Apo-2 ligand; Apo-2L; TNF-related apoptosis-inducing ligand; Protein TRAIL; CD253
Molecular Weight :	33KD

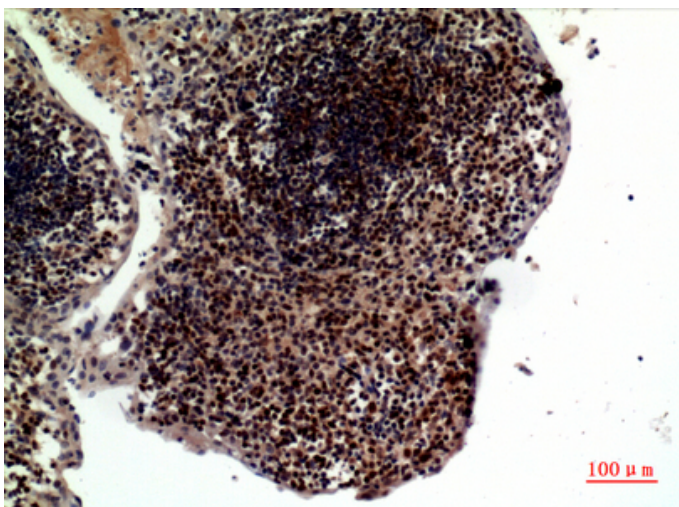
## Product Images



Western Blot analysis of HeLa cells using TRAIL Polyclonal Antibody.. Secondary antibody was diluted at 1:20000

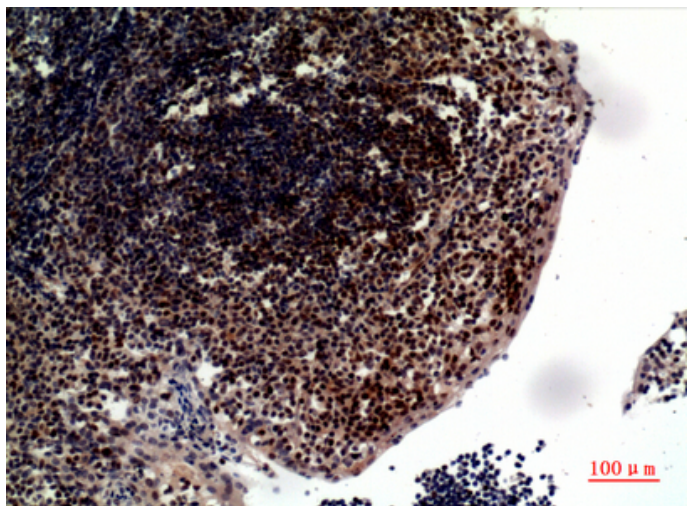


Immunohistochemical analysis of paraffin-embedded human lymph nodes, antibody was diluted at 1:100



Immunohistochemical analysis of paraffin-embedded human tonsilla, antibody was diluted at 1:100

Immunohistochemical analysis of paraffin-embedded



human-tonsilla, antibody was diluted at 1:100