

## IL-1F8 Polyclonal Antibody

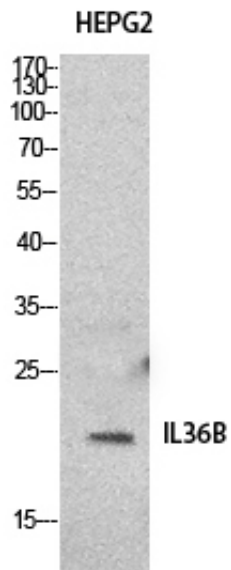
Catalog_no :	AT5512
Applications :	WB,IHC-p,ELISA
Reactivity :	Human
Category :	抗原抗体
Size :	100µg/50µg/20µg
Gene_name :	IL36B
Protein_name :	Interleukin-36 beta
Humangene_id :	<a href="#">27177</a>
Humanswissprot_no :	<a href="#">Q9NZH7</a>
Mousegene_id :	<a href="#">69677</a>
Mouseswissprot_no :	<a href="#">Q9D6Z6</a>
Immunogen :	The antiserum was produced against synthesized peptide derived from the C-terminal region of human IL36B. AA range:111-160
Specificity :	IL-1F8 Polyclonal Antibody detects endogenous levels of IL-1F8 protein.
Formulation :	Liquid in PBS containing 50% glycerol, 0.5% BSA and 0.02% sodium azide.
Source :	Rabbit
Dilution :	Western Blot: 1/500 - 1/2000. IHC-p: 1/100-1/300. ELISA: 1/20000. Not yet tested in other applications.
Purification :	The antibody was affinity-purified from rabbit antiserum by affinity-chromatography using epitope-specific immunogen.
Concentration :	1 mg/ml
Storage_stability :	-20°C/1 year
Msds :	MSDS_Antibody.pdf
Other_name :	IL36B; IL1F8; IL1H2; Interleukin-36 beta; FIL1 eta; Interleukin-1 eta; IL-1 eta; Interleukin-1 family member 8; IL-1F8; Interleukin-1 homolog 2; IL-1H2
Molecular	19KD



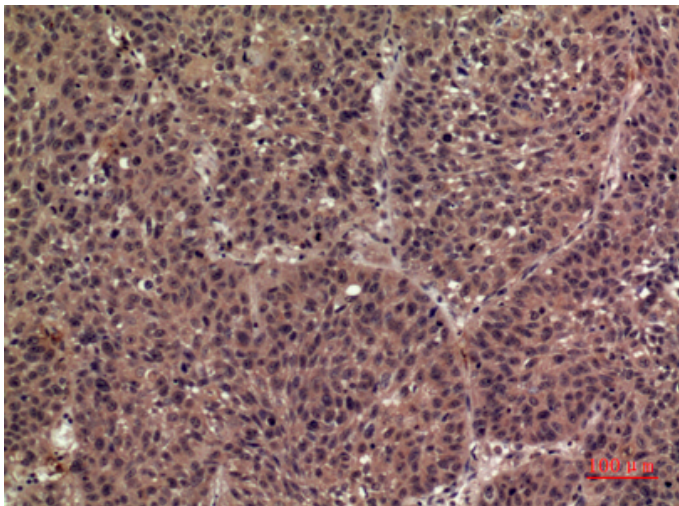
Weight :

---

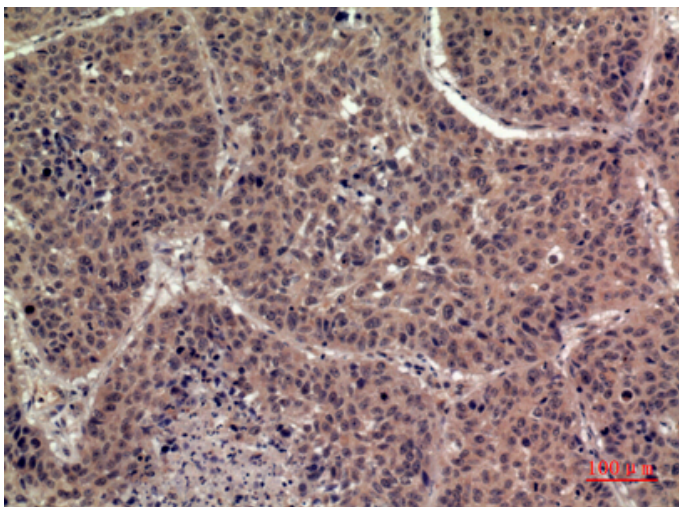
## Product Images



Western Blot analysis of HepG2 cells using IL-1F8 Polyclonal Antibody.. Secondary antibody was diluted at 1:20000



Immunohistochemical analysis of paraffin-embedded human-lung, antibody was diluted at 1:100



Immunohistochemical analysis of paraffin-embedded human-lung, antibody was diluted at 1:100