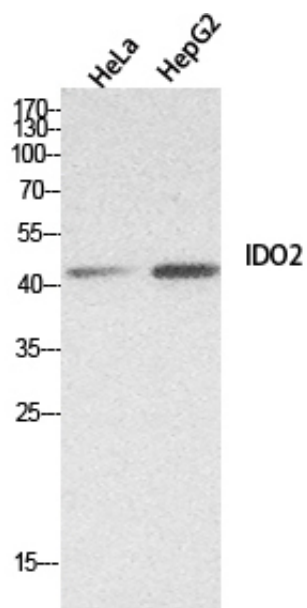


INDOL1 Polyclonal Antibody

Catalog_no :	AT5515
Applications :	WB,ELISA
Reactivity :	Human
Category :	抗原抗体
Size :	100µg/50µg/20µg
Gene_name :	IDO2
Protein_name :	Indoleamine 2,3-dioxygenase 2
Humangene_id :	169355
Humanswissprot_no :	Q6ZQW0
Immunogen :	The antiserum was produced against synthesized peptide derived from the Internal region of human IDO2. AA range:101-150
Specificity :	INDOL1 Polyclonal Antibody detects endogenous levels of INDOL1 protein.
Formulation :	Liquid in PBS containing 50% glycerol, 0.5% BSA and 0.02% sodium azide.
Source :	Rabbit
Dilution :	Western Blot: 1/500 - 1/2000. ELISA: 1/20000. Not yet tested in other applications.
Purification :	The antibody was affinity-purified from rabbit antiserum by affinity-chromatography using epitope-specific immunogen.
Concentration :	1 mg/ml
Storage_stability :	-20°C/1 year
Msds :	MSDS_Antibody.pdf
Other_name :	IDO2; INDOL1; Indoleamine 2,3-dioxygenase 2; IDO-2; Indoleamine 2,3-dioxygenase-like protein 1; Indoleamine-pyrrole 2,3-dioxygenase-like protein 1
Molecular Weight :	45KD

Product Images



Western Blot analysis of HeLa, HepG2 cells using INDOL1 Polyclonal Antibody.. Secondary antibody was diluted at 1:20000