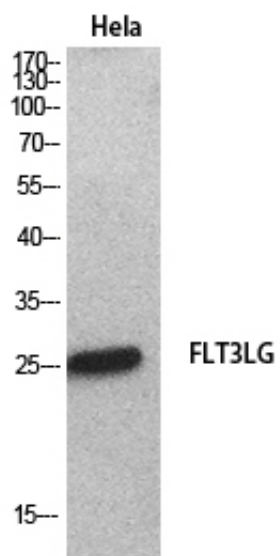


Flt3-L Polyclonal Antibody

| | |
|---------------------|--|
| Catalog_no : | <u>AT5516</u> |
| Applications : | <u>WB,ELISA</u> |
| Reactivity : | <u>Human</u> |
| Category : | <u>抗原抗体</u> |
| Size : | <u>100µg/50µg/20µg</u> |
| Gene_name : | <u>FLT3LG</u> |
| Protein_name : | <u>Fms-related tyrosine kinase 3 ligand</u> |
| Humangene_id : | <u>2323</u> |
| Humanswissprot_no : | <u>P49771</u> |
| Immunogen : | <u>The antiserum was produced against synthesized peptide derived from the C-terminal region of human FLT3LG. AA range:171-220</u> |
| Specificity : | <u>Flt3-L Polyclonal Antibody detects endogenous levels of Flt3-L protein.</u> |
| Formulation : | <u>Liquid in PBS containing 50% glycerol, 0.5% BSA and 0.02% sodium azide.</u> |
| Source : | <u>Rabbit</u> |
| Dilution : | <u>Western Blot: 1/500 - 1/2000. ELISA: 1/20000. Not yet tested in other applications.</u> |
| Purification : | <u>The antibody was affinity-purified from rabbit antiserum by affinity-chromatography using epitope-specific immunogen.</u> |
| Concentration : | <u>1 mg/ml</u> |
| Storage_stability : | <u>-20°C/1 year</u> |
| Msds : | <u>MSDS_Antibody.pdf</u> |
| Other_name : | <u>FLT3LG; Fms-related tyrosine kinase 3 ligand; Flt3 ligand; Flt3L; SL cytokine</u> |
| Molecular Weight : | <u>26KD</u> |

Product Images



Western Blot analysis of HeLa cells using Flt3-L Polyclonal Antibody.. Secondary antibody was diluted at 1:20000