

MAG Polyclonal Antibody

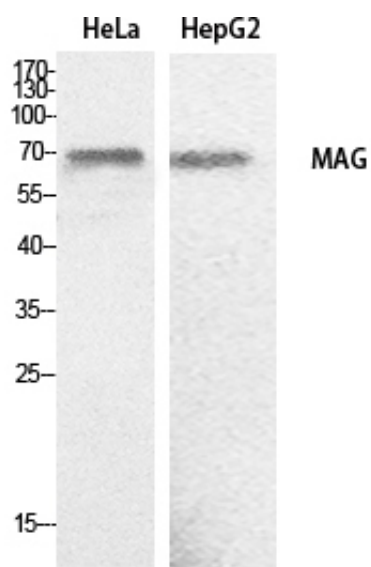
| | |
|---------------------|---|
| Catalog_no : | <u>AT5517</u> |
| Applications : | <u>WB,ELISA</u> |
| Reactivity : | <u>Human,Mouse,Rat</u> |
| Category : | <u>抗原抗体</u> |
| Size : | <u>100µg/50µg/20µg</u> |
| Gene_name : | <u>MAG</u> |
| Protein_name : | <u>Myelin-associated glycoprotein</u> |
| Humangene_id : | <u>4099</u> |
| Humanswissprot_no : | <u>P20916</u> |
| Mousegene_id : | <u>17136</u> |
| Mouseswissprot_no : | <u>P20917</u> |
| Ratgene_id : | <u>29409</u> |
| Ratswissprot_no : | <u>P07722</u> |
| Immunogen : | <u>The antiserum was produced against synthesized peptide derived from the C-terminal region of human MAG. AA range:501-550</u> |
| Specificity : | <u>MAG Polyclonal Antibody detects endogenous levels of MAG protein.</u> |
| Formulation : | <u>Liquid in PBS containing 50% glycerol, 0.5% BSA and 0.02% sodium azide.</u> |
| Source : | <u>Rabbit</u> |
| Dilution : | <u>Western Blot: 1/500 - 1/2000. ELISA: 1/20000. Not yet tested in other applications.</u> |
| Purification : | <u>The antibody was affinity-purified from rabbit antiserum by affinity-chromatography using epitope-specific immunogen.</u> |
| Concentration : | <u>1 mg/ml</u> |
| Storage_stability : | <u>-20°C/1 year</u> |
| Msds : | <u>MSDS_Antibody.pdf</u> |



Other_name : MAG; GMA; Myelin-associated glycoprotein; Siglec-4a

Molecular Weight : 70KD

Product Images



Western Blot analysis of HeLa, HepG2 cells using MAG Polyclonal Antibody.. Secondary antibody was diluted at 1:20000