

TRPC3 Polyclonal Antibody

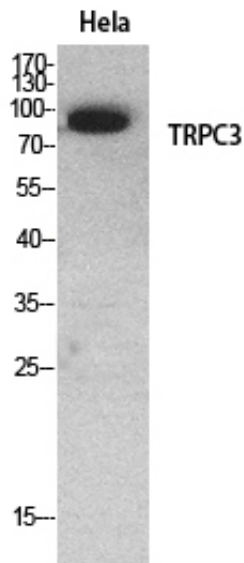
Catalog_no :	AT5520
Applications :	WB,IHC-p,ELISA
Reactivity :	Human,Mouse,Rat
Category :	抗原抗体
Size :	100µg/50µg/20µg
Gene_name :	TRPC3
Protein_name :	Short transient receptor potential channel 3
Humangene_id :	7222
Humanswissprot_no :	Q13507
Mouseswissprot_no :	Q9QZC1
Ratswissprot_no :	Q9JMI9
Immunogen :	The antiserum was produced against synthesized peptide derived from the Internal region of human TRPC3. AA range:411-460
Specificity :	TRPC3 Polyclonal Antibody detects endogenous levels of TRPC3 protein.
Formulation :	Liquid in PBS containing 50% glycerol, 0.5% BSA and 0.02% sodium azide.
Source :	Rabbit
Dilution :	Western Blot: 1/500 - 1/2000. IHC-p: 1:100-1:300. ELISA: 1/20000. Not yet tested in other applications.
Purification :	The antibody was affinity-purified from rabbit antiserum by affinity-chromatography using epitope-specific immunogen.
Concentration :	1 mg/ml
Storage_stability :	-20°C/1 year
Msds :	MSDS_Antibody.pdf
Other_name :	TRPC3; TRP3; Short transient receptor potential channel 3; TrpC3; Transient receptor protein 3; TRP-3; hTrp-3; hTrp3



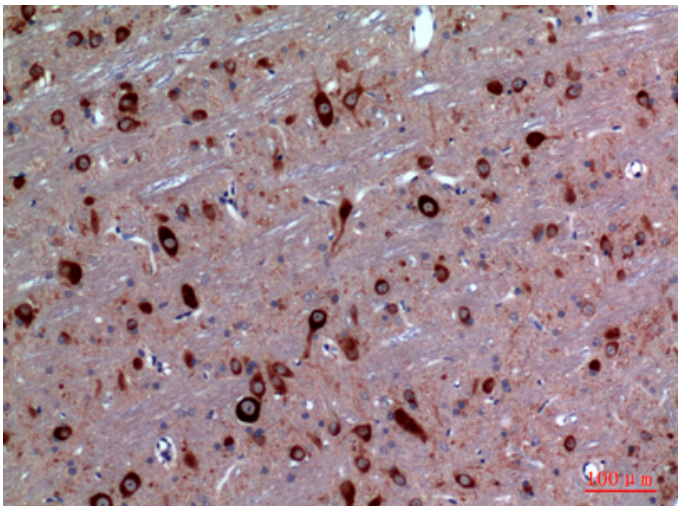
Molecular
Weight :

97KD

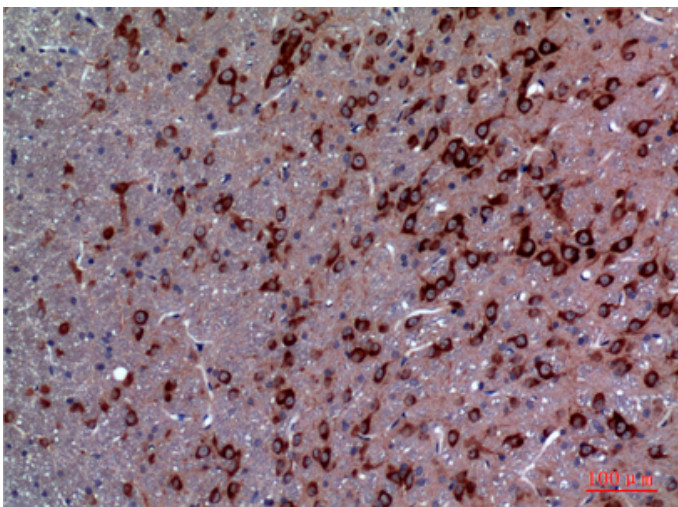
Product Images



Western Blot analysis of HeLa cells using TRPC3 Polyclonal Antibody.. Secondary antibody was diluted at 1:20000

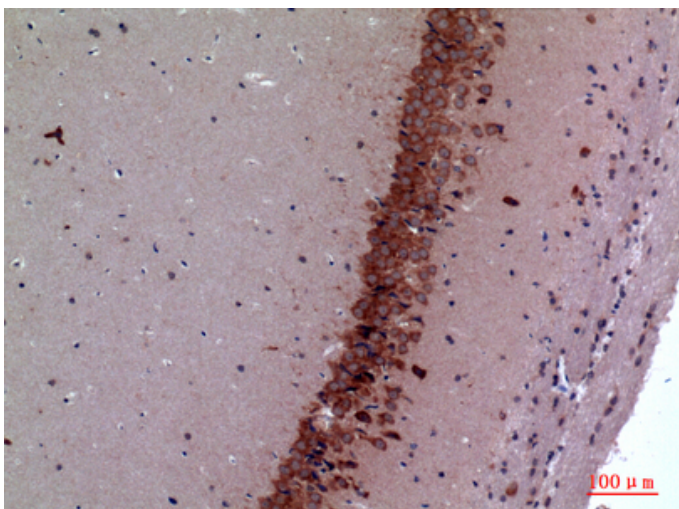
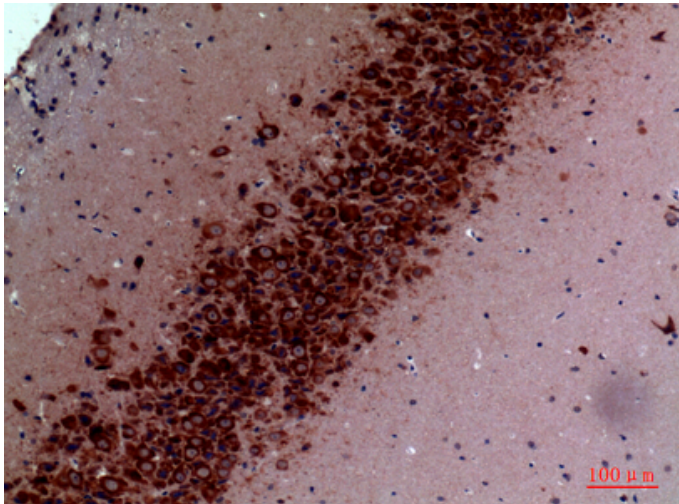


Immunohistochemical analysis of paraffin-embedded rat-brain, antibody was diluted at 1:100



Immunohistochemical analysis of paraffin-embedded rat-brain, antibody was diluted at 1:100

Immunohistochemical analysis of paraffin-embedded mouse-brain, antibody was diluted at 1:100



Immunohistochemical analysis of paraffin-embedded mouse-brain, antibody was diluted at 1:100