

## SPARC Polyclonal Antibody

Catalog_no :	AT5521
Applications :	WB,IHC-p,ELISA
Reactivity :	Human,Mouse,Rat
Category :	抗原抗体
Size :	100µg/50µg/20µg
Gene_name :	SPARC
Protein_name :	SPARC
Humangene_id :	<a href="#">6678</a>
Humanswissprot_no :	<a href="#">P09486</a>
Mousegene_id :	<a href="#">20692</a>
Mouseswissprot_no :	<a href="#">P07214</a>
Ratgene_id :	<a href="#">24791</a>
Ratswissprot_no :	<a href="#">P16975</a>
Immunogen :	The antiserum was produced against synthesized peptide derived from the Internal region of human SPARC. AA range:141-190
Specificity :	SPARC Polyclonal Antibody detects endogenous levels of SPARC protein.
Formulation :	Liquid in PBS containing 50% glycerol, 0.5% BSA and 0.02% sodium azide.
Source :	Rabbit
Dilution :	Western Blot: 1/500 - 1/2000. IHC-p: 1:100-1:300. ELISA: 1/20000. Not yet tested in other applications.
Purification :	The antibody was affinity-purified from rabbit antiserum by affinity-chromatography using epitope-specific immunogen.
Concentration :	1 mg/ml
Storage_stability :	-20°C/1 year
Msds :	MSDS_Antibody.pdf



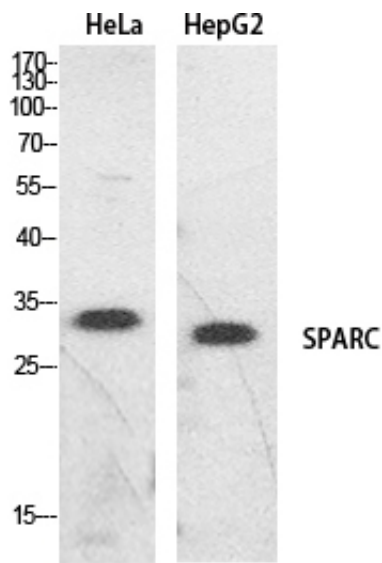
Other\_name : SPARC; ON; SPARC; Basement-membrane protein 40; BM-40; Osteonectin; ON; Secreted protein acidic and rich in cysteine

---

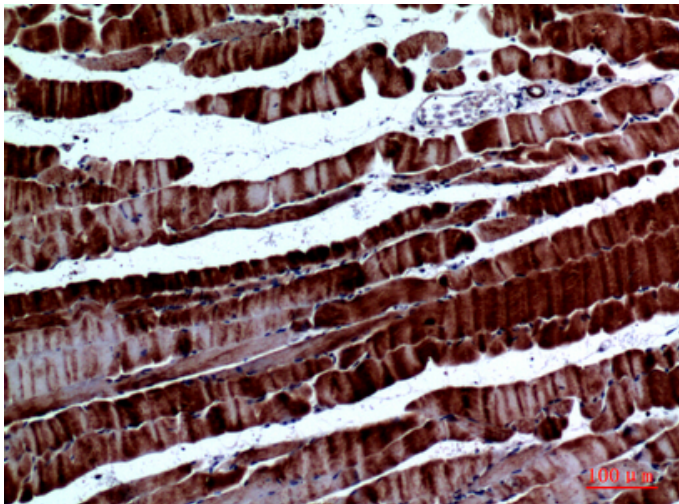
Molecular Weight : 34KD

---

## Product Images



Western Blot analysis of HeLa, HepG2 cells using SPARC Polyclonal Antibody.. Secondary antibody was diluted at 1:20000



Immunohistochemical analysis of paraffin-embedded mouse-muscle, antibody was diluted at 1:100