



## Glut4 Polyclonal Antibody

Catalog_no :	<u>AT5523</u>
Applications :	<u>WB,IHC-p,ELISA</u>
Reactivity :	<u>Human,Mouse,Rat</u>
Category :	<u>抗原抗体</u>
Size :	<u>100µg/50µg/20µg</u>
Gene_name :	<u>SLC2A4</u>
Protein_name :	<u>Solute carrier family 2 facilitated glucose transporter member 4</u>
Humangene_id :	<u><a href="#">6517</a></u>
Humanswissprot_no :	<u><a href="#">P14672</a></u>
Mousegene_id :	<u><a href="#">20528</a></u>
Mouseswissprot_no :	<u><a href="#">P14142</a></u>
Ratgene_id :	<u><a href="#">25139</a></u>
Ratswissprot_no :	<u><a href="#">P19357</a></u>
Immunogen :	<u>The antiserum was produced against synthesized peptide derived from the N-terminal region of human SLC2A4. AA range:21-70</u>
Specificity :	<u>Glut4 Polyclonal Antibody detects endogenous levels of Glut4 protein.</u>
Formulation :	<u>Liquid in PBS containing 50% glycerol, 0.5% BSA and 0.02% sodium azide.</u>
Source :	<u>Rabbit</u>
Dilution :	<u>WB 1:500-2000, ELISA 1:10000-20000 IHC 1:50-300</u>
Purification :	<u>The antibody was affinity-purified from rabbit antiserum by affinity-chromatography using epitope-specific immunogen.</u>
Concentration :	<u>1 mg/ml</u>
Storage_stability :	<u>-20°C/1 year</u>
Msds :	<u><a href="#">MSDS_Antibody.pdf</a></u>



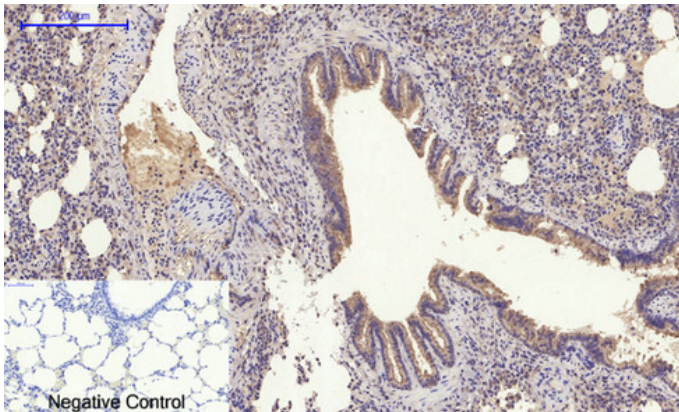
Other\_name : SLC2A4; GLUT4; Solute carrier family 2, facilitated glucose transporter member 4;  
Glucose transporter type 4, insulin-responsive; GLUT-4

---

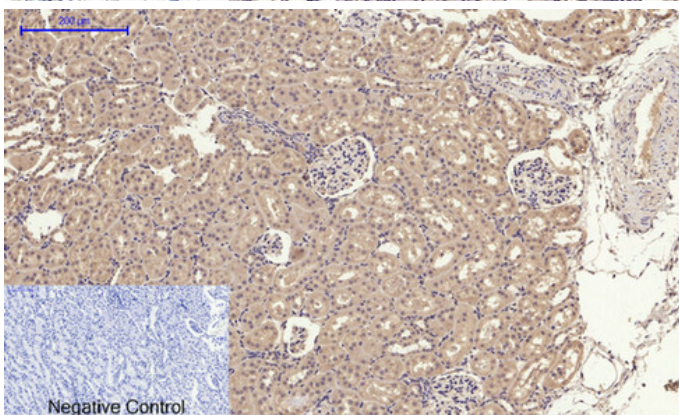
Molecular Weight : 56KD

---

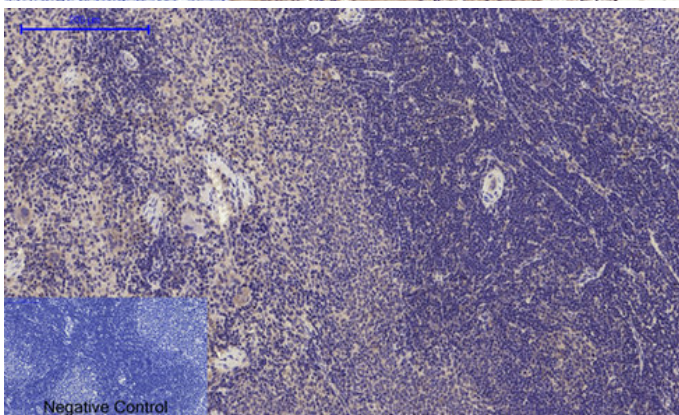
## Product Images



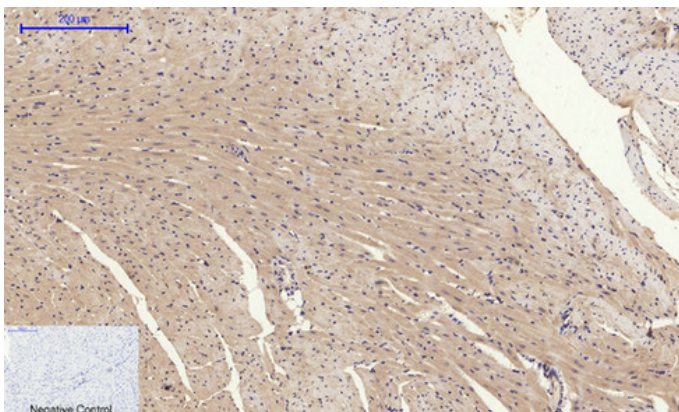
Immunohistochemical analysis of paraffin-embedded Rat-lung tissue. 1,Glut4 Polyclonal Antibody was diluted at 1:200(4°C,overnight). 2, Sodium citrate pH 6.0 was used for antibody retrieval(>98°C,20min). 3,Secondary antibody was diluted at 1:200(room temperature, 30min). Negative control was used by secondary antibody only.



Immunohistochemical analysis of paraffin-embedded Rat-kidney tissue. 1,Glut4 Polyclonal Antibody was diluted at 1:200(4°C,overnight). 2, Sodium citrate pH 6.0 was used for antibody retrieval(>98°C,20min). 3,Secondary antibody was diluted at 1:200(room temperature, 30min). Negative control was used by secondary antibody only.



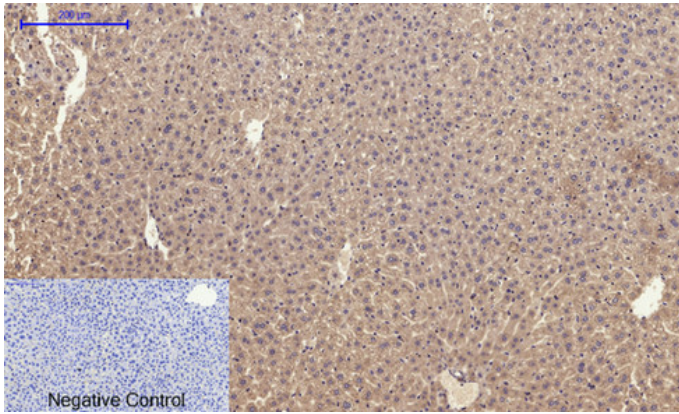
Immunohistochemical analysis of paraffin-embedded Rat-spleen tissue. 1,Glut4 Polyclonal Antibody was diluted at 1:200(4°C,overnight). 2, Sodium citrate pH 6.0 was used for antibody retrieval(>98°C,20min). 3,Secondary antibody was diluted at 1:200(room temperature, 30min). Negative control was used by secondary antibody only.



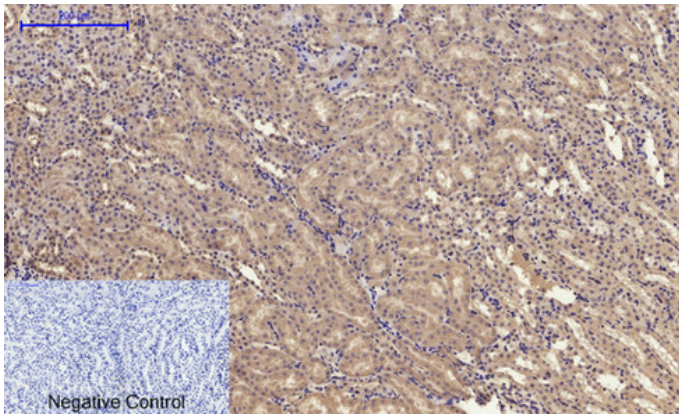
Immunohistochemical analysis of paraffin-embedded Mouse-heart tissue. 1,Glut4 Polyclonal Antibody was diluted at 1:200(4°C,overnight). 2, Sodium citrate pH 6.0 was used for antibody retrieval(>98°C,20min). 3,Secondary antibody was diluted at 1:200(room temperature, 30min). Negative control was used by secondary antibody only.

Immunohistochemical analysis of paraffin-embedded Mouse-liver tissue. 1,Glut4 Polyclonal Antibody was

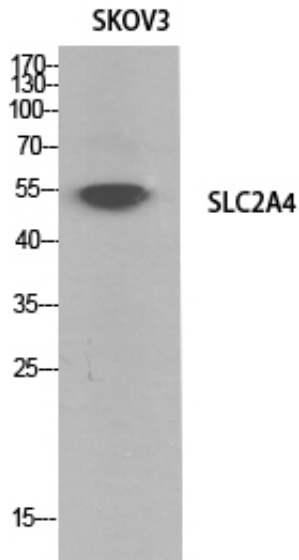




diluted at 1:200(4°C,overnight). 2, Sodium citrate pH 6.0 was used for antibody retrieval(>98°C,20min). 3,Secondary antibody was diluted at 1:200(room temperature, 30min). Negative control was used by secondary antibody only.



Immunohistochemical analysis of paraffin-embedded Mouse-kidney tissue. 1,Glut4 Polyclonal Antibody was diluted at 1:200(4°C,overnight). 2, Sodium citrate pH 6.0 was used for antibody retrieval(>98°C,20min). 3,Secondary antibody was diluted at 1:200(room temperature, 30min). Negative control was used by secondary antibody only.



Western Blot analysis of SKOV3 cells using Glut4 Polyclonal Antibody.. Secondary antibody was diluted at 1:20000