

ALR Polyclonal Antibody

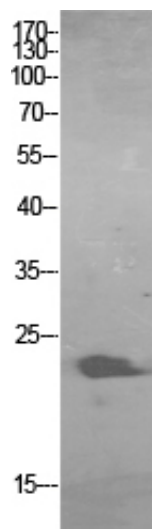
Catalog_no :	AT5529
Applications :	WB,IHC-p,ELISA
Reactivity :	Human,Mouse,Rat
Category :	抗原抗体
Size :	100µg/50µg/20µg
Gene_name :	GFER
Protein_name :	FAD-linked sulfhydryl oxidase ALR
Humangene_id :	2671
Humanswissprot_no :	P55789
Mousegene_id :	11692
Mouseswissprot_no :	P56213
Ratgene_id :	27100
Ratswissprot_no :	Q63042
Immunogen :	The antiserum was produced against synthesized peptide derived from the Internal region of human GFER. AA range:51-100
Specificity :	ALR Polyclonal Antibody detects endogenous levels of ALR protein.
Formulation :	Liquid in PBS containing 50% glycerol, 0.5% BSA and 0.02% sodium azide.
Source :	Rabbit
Dilution :	Western Blot: 1/500 - 1/2000. IHC-p: 1:100-1:300. ELISA: 1/20000. Not yet tested in other applications.
Purification :	The antibody was affinity-purified from rabbit antiserum by affinity-chromatography using epitope-specific immunogen.
Concentration :	1 mg/ml
Storage_stability :	-20°C/1 year
Msds :	MSDS_Antibody.pdf



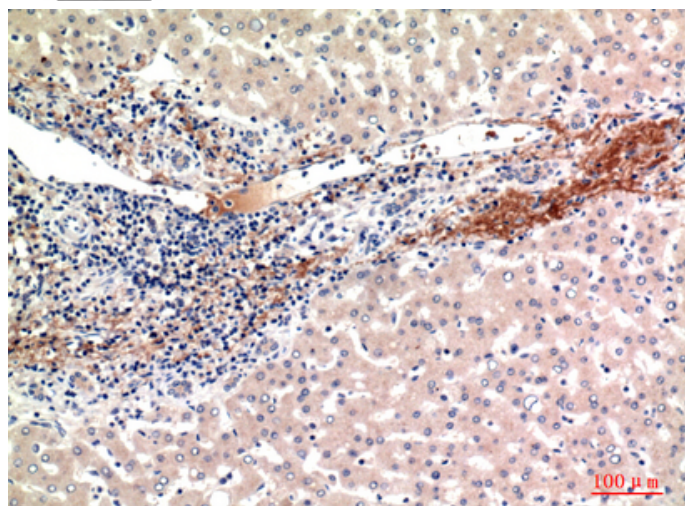
Other_name : GFER; ALR; HERV1; HPO; FAD-linked sulfhydryl oxidase ALR; Augmenter of liver regeneration; hERV1; Hepatopoietin

Molecular Weight : 24KD

Product Images



Western Blot analysis of HBE cells using ALR Polyclonal Antibody.. Secondary antibody was diluted at 1:20000



Immunohistochemical analysis of paraffin-embedded human-liver, antibody was diluted at 1:100