

IFITM2 Polyclonal Antibody

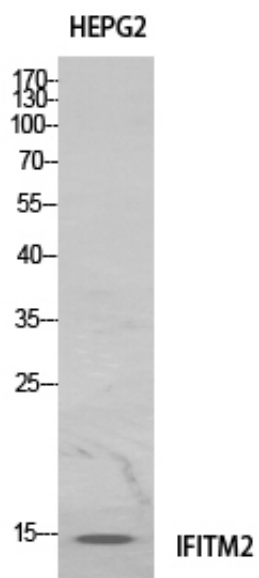
Catalog_no :	AT5532
Applications :	WB,ELISA
Reactivity :	Human
Category :	抗原抗体
Size :	100µg/50µg/20µg
Gene_name :	IFITM2
Protein_name :	Interferon-induced transmembrane protein 2
Humangene_id :	10581
Humanswissprot_no :	Q01629
Mousegene_id :	80876
Mouseswissprot_no :	Q99J93
Immunogen :	The antiserum was produced against synthesized peptide derived from the Internal region of human IFITM2. AA range:1-50
Specificity :	IFITM2 Polyclonal Antibody detects endogenous levels of IFITM2 protein.
Formulation :	Liquid in PBS containing 50% glycerol, 0.5% BSA and 0.02% sodium azide.
Source :	Rabbit
Dilution :	Western Blot: 1/500 - 1/2000. ELISA: 1/20000. Not yet tested in other applications.
Purification :	The antibody was affinity-purified from rabbit antiserum by affinity-chromatography using epitope-specific immunogen.
Concentration :	1 mg/ml
Storage_stability :	-20°C/1 year
Msds :	MSDS_Antibody.pdf
Other_name :	IFITM2; Interferon-induced transmembrane protein 2; Dispanin subfamily A member 2c; DSPA2c; Interferon-inducible protein 1-8D
Molecular Weight :	15KD



专注二抗产品

Biodragon旗下品牌

Product Images



Western Blot analysis of HeLa cells using IFITM2 Polyclonal Antibody. Antibody was diluted at 1:1000. Secondary antibody was diluted at 1:20000