



COL5A2 Polyclonal Antibody

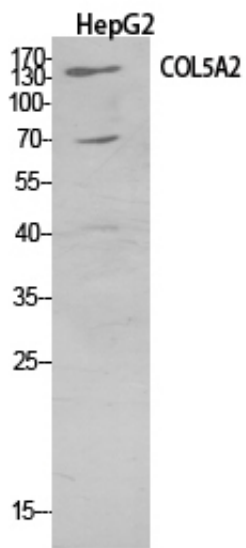
Catalog_no :	<u>AT5533</u>
Applications :	<u>WB,IHC-p,ELISA</u>
Reactivity :	<u>Human</u>
Category :	<u>抗原抗体</u>
Size :	<u>100µg/50µg/20µg</u>
Gene_name :	<u>COL5A2</u>
Protein_name :	<u>Collagen alpha-2(V) chain</u>
Humangene_id :	<u>1290</u>
Humanswissprot_no :	<u>P05997</u>
Mousegene_id :	<u>12832</u>
Mouseswissprot_no :	<u>Q3U962</u>
Immunogen :	<u>The antiserum was produced against synthesized peptide derived from the N-terminal region of human COL5A2. AA range:1-50</u>
Specificity :	<u>COL5A2 Polyclonal Antibody detects endogenous levels of COL5A2 protein.</u>
Formulation :	<u>Liquid in PBS containing 50% glycerol, 0.5% BSA and 0.02% sodium azide.</u>
Source :	<u>Rabbit</u>
Dilution :	<u>Western Blot: 1/500 - 1/2000. IHC-p: 1:100-1:300. ELISA: 1/20000. Not yet tested in other applications.</u>
Purification :	<u>The antibody was affinity-purified from rabbit antiserum by affinity-chromatography using epitope-specific immunogen.</u>
Concentration :	<u>1 mg/ml</u>
Storage_stability :	<u>-20°C/1 year</u>
Msds :	<u>MSDS_Antibody.pdf</u>
Other_name :	<u>COL5A2; Collagen alpha-2(V) chain</u>
Molecular Weight :	<u>145KD</u>



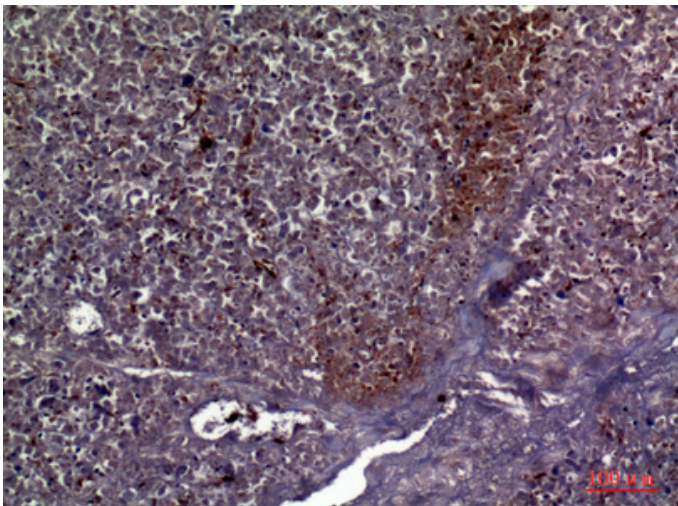
专注二抗产品

Biodragon旗下品牌

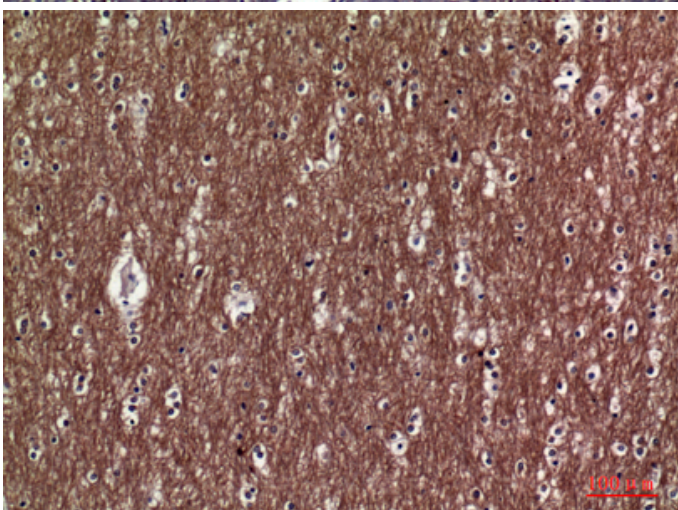
Product Images



Western Blot analysis of HepG2 cells using COL5A2 Polyclonal Antibody.. Secondary antibody was diluted at 1:20000



Immunohistochemical analysis of paraffin-embedded human-pancreas, antibody was diluted at 1:100



Immunohistochemical analysis of paraffin-embedded human-brain, antibody was diluted at 1:100

Immunohistochemical analysis of paraffin-embedded human-brain, antibody was diluted at 1:100

