

RSAD2 Polyclonal Antibody

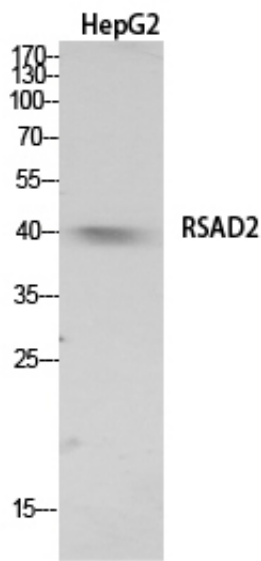
Catalog_no :	AT5534
Applications :	WB,IHC-p,ELISA
Reactivity :	Human
Category :	抗原抗体
Size :	100µg/50µg/20µg
Gene_name :	RSAD2
Protein_name :	Radical S-adenosyl methionine domain-containing protein 2
Humangene_id :	91543
Humanswissprot_no :	Q8WXG1
Mousegene_id :	58185
Mouseswissprot_no :	Q8CBB9
Ratgene_id :	65190
Ratswissprot_no :	O70600
Immunogen :	The antiserum was produced against synthesized peptide derived from the N-terminal region of human RSAD2. AA range:21-70
Specificity :	RSAD2 Polyclonal Antibody detects endogenous levels of RSAD2 protein.
Formulation :	Liquid in PBS containing 50% glycerol, 0.5% BSA and 0.02% sodium azide.
Source :	Rabbit
Dilution :	Western Blot: 1/500 - 1/2000. IHC-p: 1:100-1:300. ELISA: 1/20000. Not yet tested in other applications.
Purification :	The antibody was affinity-purified from rabbit antiserum by affinity-chromatography using epitope-specific immunogen.
Concentration :	1 mg/ml
Storage_stability :	-20°C/1 year
Msds :	MSDS_Antibody.pdf



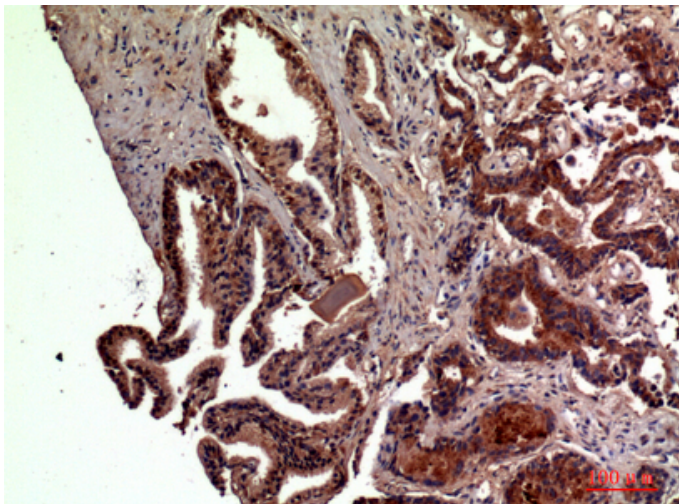
Other_name : RSAD2; CIG5; Radical S-adenosyl methionine domain-containing protein 2;
Cytomegalovirus-induced gene 5 protein; Viperin; Virus inhibitory protein, endoplasmic
reticulum-associated, interferon-inducible

Molecular Weight : 42KD

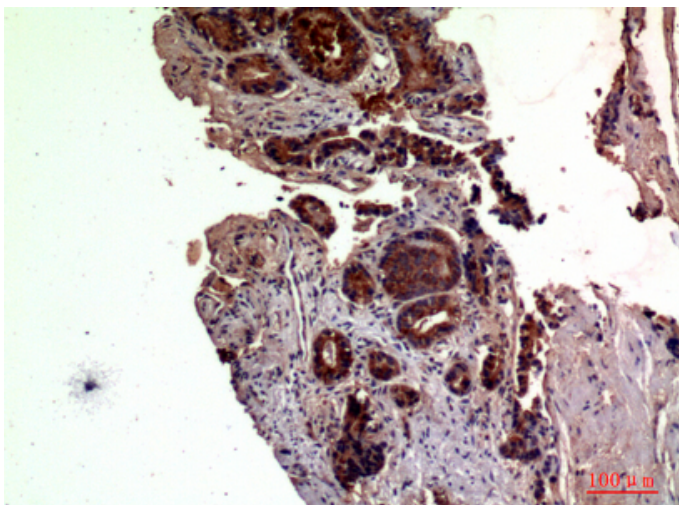
Product Images



Western Blot analysis of HepG2 cells using RSAD2 Polyclonal Antibody.. Secondary antibody was diluted at 1:20000



Immunohistochemical analysis of paraffin-embedded human-prostate-cancer, antibody was diluted at 1:100



Immunohistochemical analysis of paraffin-embedded human-prostate-cancer, antibody was diluted at 1:100

Immunohistochemical analysis of paraffin-embedded human-brain, antibody was diluted at 1:100

