

## Neurotensin Polyclonal Antibody

Catalog_no :	<u>AT5535</u>
Applications :	<u>WB,ELISA</u>
Reactivity :	<u>Human,Mouse,Rat</u>
Category :	<u>抗原抗体</u>
Size :	<u>100µg/50µg/20µg</u>
Gene_name :	<u>NTS</u>
Protein_name :	<u>Neurotensin/neuromedin N</u>
Humangene_id	<u><a href="#">4922</a></u>
:	
Humanswissprot	<u><a href="#">P30990</a></u>
_no :	
Mousegene_id :	<u><a href="#">67405</a></u>
Mouseswissprot	<u><a href="#">Q9D3P9</a></u>
_no :	
Ratswissprot_no	<u><a href="#">P20068</a></u>
:	
Immunogen :	<u>The antiserum was produced against synthesized peptide derived from the C-terminal region of human NTS. AA range:121-170</u>
Specificity :	<u>Neurotensin Polyclonal Antibody detects endogenous levels of Neurotensin protein.</u>
Formulation :	<u>Liquid in PBS containing 50% glycerol, 0.5% BSA and 0.02% sodium azide.</u>
Source :	<u>Rabbit</u>
Dilution :	<u>Western Blot: 1/500 - 1/2000. ELISA: 1/20000. Not yet tested in other applications.</u>
Purification :	<u>The antibody was affinity-purified from rabbit antiserum by affinity-chromatography using epitope-specific immunogen.</u>
Concentration :	<u>1 mg/ml</u>
Storage_stability	<u>-20°C/1 year</u>
:	
Msds :	<u><a href="#">MSDS_Antibody.pdf</a></u>
Other_name :	<u>NTS; Neurotensin/neuromedin N</u>

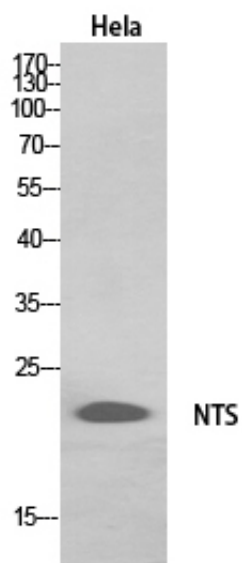


Molecular  
Weight :

20KD

---

## Product Images



Western Blot analysis of HeLa, HepG2 cells using Neurotensin Polyclonal Antibody.. Secondary antibody was diluted at 1:20000