

ANG I Polyclonal Antibody

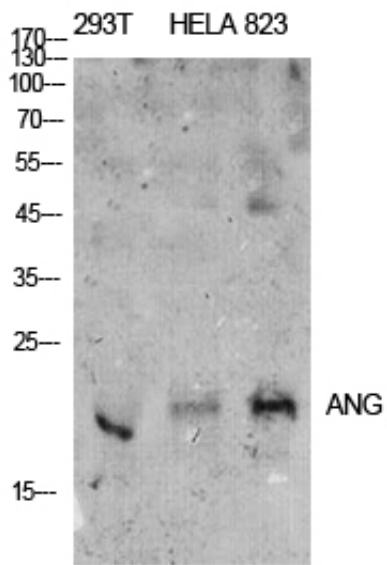
Catalog_no :	AT5543
Applications :	WB,IHC-p,ELISA
Reactivity :	Human
Category :	抗原抗体
Size :	100µg/50µg/20µg
Gene_name :	ANG
Protein_name :	Angiogenin
Humangene_id :	283
Humanswissprot_no :	P03950
Mousegene_id :	
Mouseswissprot_no :	P21570
Ratgene_id :	
Ratswissprot_no :	
Immunogen :	The antiserum was produced against synthesized peptide derived from the N-terminal region of human ANG. AA range:11-60
Specificity :	ANG I Polyclonal Antibody detects endogenous levels of ANG I protein.
Formulation :	Liquid in PBS containing 50% glycerol, 0.5% BSA and 0.02% sodium azide.
Source :	Rabbit
Dilution :	Western Blot: 1/500 - 1/2000. IHC-p: 1:100-1:300. ELISA: 1/10000. Not yet tested in other applications.
Purification :	The antibody was affinity-purified from rabbit antiserum by affinity-chromatography using epitope-specific immunogen.
Concentration :	1 mg/ml
Storage_stability :	-20°C/1 year
Msds :	MSDS_Antibody.pdf



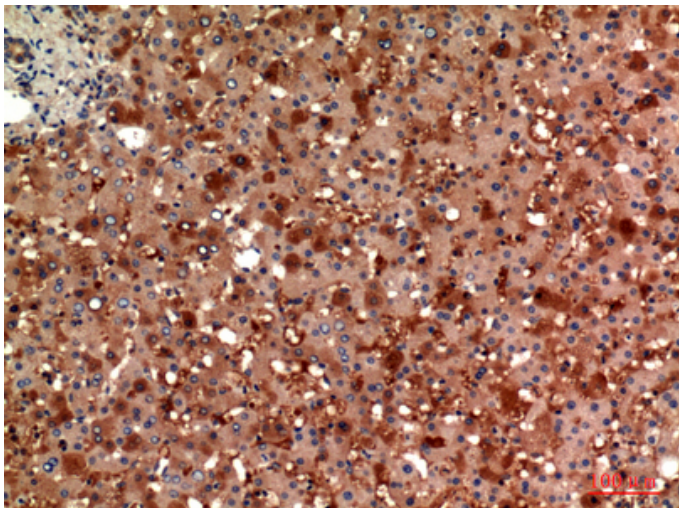
Other_name : ANG; RNASE5; Angiogenin; Ribonuclease 5; RNase 5

Molecular Weight : 17KD

Product Images



Western Blot analysis of 293T, Hela, 823 cells using ANG I Polyclonal Antibody. Antibody was diluted at 1:500. Secondary antibody was diluted at 1:20000 cells nucleus extracted by Minute TM Cytoplasmic and Nuclear Fractionation kit (SC-003, Inventbiotech, MN, USA).



Immunohistochemical analysis of paraffin-embedded human-liver, antibody was diluted at 1:100