

Bag-3 Polyclonal Antibody

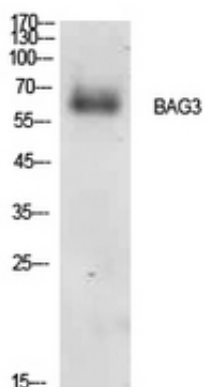
| | |
|---------------------|---|
| Catalog_no : | AT5544 |
| Applications : | WB,IHC-p,ELISA |
| Reactivity : | Human |
| Category : | 抗原抗体 |
| Size : | 100µg/50µg/20µg |
| Gene_name : | BAG3 |
| Protein_name : | BAG family molecular chaperone regulator 3 |
| Humangene_id : | 9531 |
| Humanswissprot_no : | O95817 |
| Mousegene_id : | |
| Mouseswissprot_no : | Q9JLV1 |
| Ratgene_id : | |
| Ratswissprot_no : | |
| Immunogen : | The antiserum was produced against synthesized peptide derived from the Internal region of human BAG3. AA range:311-360 |
| Specificity : | Bag-3 Polyclonal Antibody detects endogenous levels of Bag-3 protein. |
| Formulation : | Liquid in PBS containing 50% glycerol, 0.5% BSA and 0.02% sodium azide. |
| Source : | Rabbit |
| Dilution : | Western Blot: 1/500 - 1/2000. IHC-p: 1:100-1:300. ELISA: 1/10000. Not yet tested in other applications. |
| Purification : | The antibody was affinity-purified from rabbit antiserum by affinity-chromatography using epitope-specific immunogen. |
| Concentration : | 1 mg/ml |
| Storage_stability : | -20°C/1 year |
| Msds : | MSDS_Antibody.pdf |



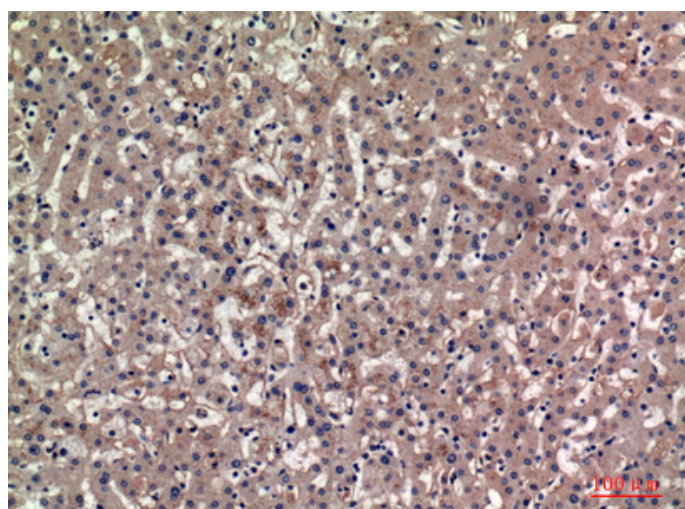
Other_name : BAG3; BIS; BAG family molecular chaperone regulator 3; BAG-3; Bcl-2-associated
athanogene 3; Bcl-2-binding protein Bis; Docking protein CAIR-1

Molecular Weight : 65KD

Product Images



Western Blot analysis of A549 cells using Bag-3 Polyclonal Antibody.. Secondary antibody was diluted at 1:20000



Immunohistochemical analysis of paraffin-embedded human-liver, antibody was diluted at 1:100