

IL-6R α Polyclonal Antibody

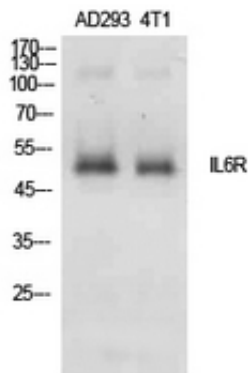
| | |
|---------------------|---|
| Catalog_no : | AT5546 |
| Applications : | WB,IHC-p,ELISA |
| Reactivity : | Human |
| Category : | 抗原抗体 |
| Size : | 100 μ g/50 μ g/20 μ g |
| Gene_name : | IL6R |
| Protein_name : | Interleukin-6 receptor subunit alpha |
| Humangene_id : | 3570 |
| Humanswissprot_no : | P08887 |
| Mousegene_id : | |
| Mouseswissprot_no : | P22272 |
| Ratgene_id : | |
| Ratswissprot_no : | |
| Immunogen : | The antiserum was produced against synthesized peptide derived from the Internal region of human IL6R. AA range:221-270 |
| Specificity : | IL-6R α Polyclonal Antibody detects endogenous levels of IL-6R α protein. |
| Formulation : | Liquid in PBS containing 50% glycerol, 0.5% BSA and 0.02% sodium azide. |
| Source : | Rabbit |
| Dilution : | IHC-p: 100-300.Western Blot: 1/500 - 1/2000. ELISA: 1/10000. Not yet tested in other applications. |
| Purification : | The antibody was affinity-purified from rabbit antiserum by affinity-chromatography using epitope-specific immunogen. |
| Concentration : | 1 mg/ml |
| Storage_stability : | -20°C/1 year |
| Msds : | MSDS_Antibody.pdf |



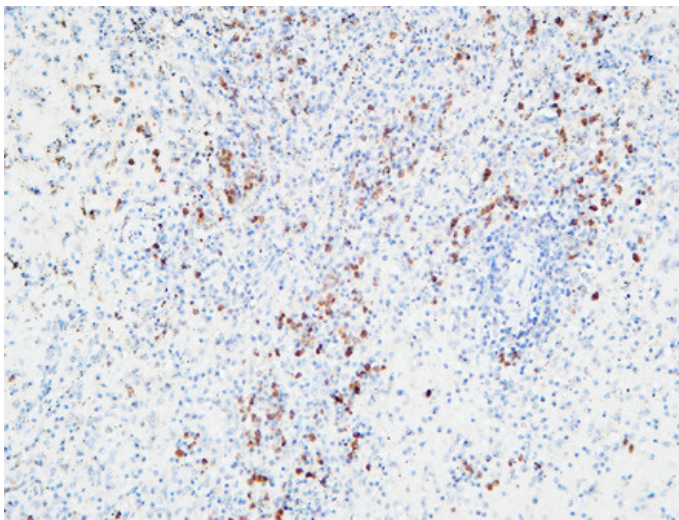
Other_name : IL6R; Interleukin-6 receptor subunit alpha; IL-6 receptor subunit alpha; IL-6R subunit alpha; IL-6R-alpha; IL-6RA; IL-6R 1; Membrane glycoprotein 80; gp80; CD126

Molecular Weight : 53KD

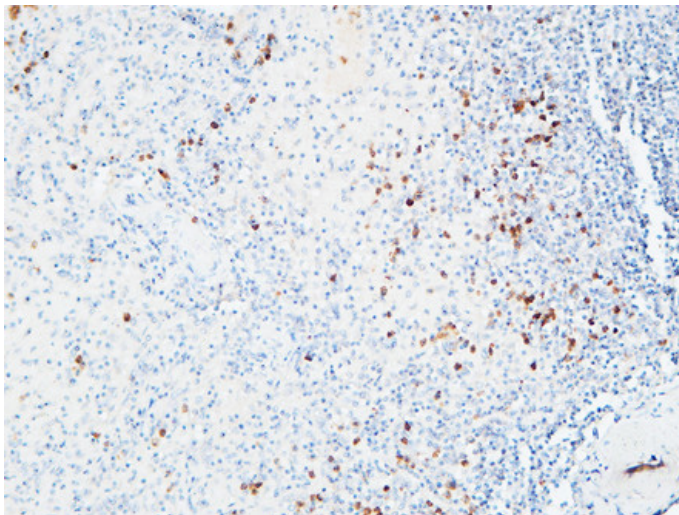
Product Images



Western Blot analysis of AD293, 4T1 cells using IL-6R α Polyclonal Antibody.. Secondary antibody was diluted at 1:20000



Immunohistochemical analysis of paraffin-embedded Human spleen. 1, Antibody was diluted at 1:200(4 $^{\circ}$,overnight). 2, High-pressure and temperature EDTA, pH8.0 was used for antigen retrieval. 3,Secondary antibody was diluted at 1:200(room temperature, 30min).



Immunohistochemical analysis of paraffin-embedded Human spleen. 1, Antibody was diluted at 1:200(4 $^{\circ}$,overnight). 2, High-pressure and temperature EDTA, pH8.0 was used for antigen retrieval. 3,Secondary antibody was diluted at 1:200(room temperature, 30min).

Immunohistochemical analysis of paraffin-embedded Human spleen. 1, Antibody was diluted at 1:200(4 $^{\circ}$,overnight). 2, High-pressure and temperature EDTA, pH8.0 was used for antigen retrieval. 3,Secondary antibody was diluted at 1:200(room temperature, 30min).

