

FGF-11 Polyclonal Antibody

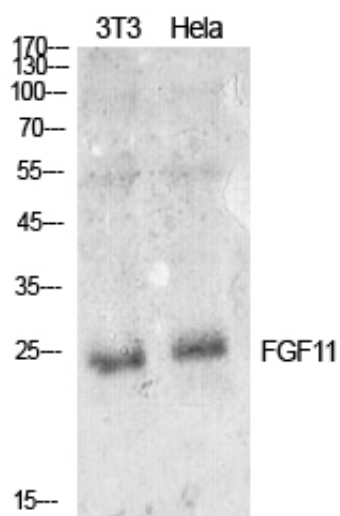
Catalog_no :	AT5547
Applications :	WB,ELISA
Reactivity :	Human,Mouse,Rat
Category :	抗原抗体
Size :	100µg/50µg/20µg
Gene_name :	FGF11
Protein_name :	Fibroblast growth factor 11
Humangene_id :	2256
Humanswissprot_no :	Q92914
Mousegene_id :	14166
Mouseswissprot_no :	P70378
Ratgene_id :	
Ratswissprot_no :	
Immunogen :	The antiserum was produced against synthesized peptide derived from the Internal region of human FGF11. AA range:21-70
Specificity :	FGF-11 Polyclonal Antibody detects endogenous levels of FGF-11 protein.
Formulation :	Liquid in PBS containing 50% glycerol, 0.5% BSA and 0.02% sodium azide.
Source :	Rabbit
Dilution :	Western Blot: 1/500 - 1/2000. ELISA: 1/10000. Not yet tested in other applications.
Purification :	The antibody was affinity-purified from rabbit antiserum by affinity-chromatography using epitope-specific immunogen.
Concentration :	1 mg/ml
Storage_stability :	-20°C/1 year
Msds :	MSDS_Antibody.pdf



Other_name : FGF11; FHF3; Fibroblast growth factor 11; FGF-11; Fibroblast growth factor homologous factor 3; FHF-3

Molecular Weight : 25KD

Product Images



Western Blot analysis of NIH-3T3, HeLa cells using FGF-11 Polyclonal Antibody.. Secondary antibody was diluted at 1:20000