

AChR α 1 Polyclonal Antibody

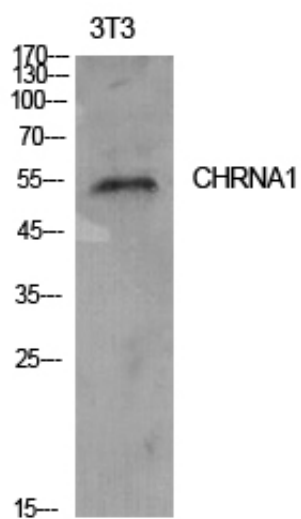
Catalog_no :	<u>AT5555</u>
Applications :	<u>WB,ELISA</u>
Reactivity :	<u>Human,Mouse,Rat</u>
Category :	<u>抗原抗体</u>
Size :	<u>100μg/50μg/20μg</u>
Gene_name :	<u>CHRNA1</u>
Protein_name :	<u>Acetylcholine receptor subunit alpha</u>
Humangene_id	<u>1134</u>
:	
Humanswissprot	<u>P02708</u>
_no :	
Mousegene_id :	<u>11435</u>
Mouseswissprot	<u>P04756</u>
_no :	
Ratgene_id :	<u>79557</u>
Ratswissprot_no	<u>P25108</u>
:	
Immunogen :	<u>The antiserum was produced against synthesized peptide derived from the Internal region of human CHRNA1. AA range:171-220</u>
Specificity :	<u>AChRα1 Polyclonal Antibody detects endogenous levels of AChRα1 protein.</u>
Formulation :	<u>Liquid in PBS containing 50% glycerol, 0.5% BSA and 0.02% sodium azide.</u>
Source :	<u>Rabbit</u>
Dilution :	<u>Western Blot: 1/500 - 1/2000. ELISA: 1/10000. Not yet tested in other applications.</u>
Purification :	<u>The antibody was affinity-purified from rabbit antiserum by affinity-chromatography using epitope-specific immunogen.</u>
Concentration :	<u>1 mg/ml</u>
Storage_stability	<u>-20°C/1 year</u>
:	
Msds :	<u>MSDS_Antibody.pdf</u>



Other_name : CHRNA1; ACHRA; CHNRA; Acetylcholine receptor subunit alpha

Molecular Weight : 55KD

Product Images



Western Blot analysis of NIH-3T3 cells using AChR α 1 Polyclonal Antibody.. Secondary antibody was diluted at 1:20000